

BRAIDED RIVERS SEMINAR

6 July 2022



Councillor Grant Edge
Environment Canterbury

Environment Canterbury Strategic Direction

- Lead climate change resilience
- Accelerate regeneration of the natural environment
- Facilitate diversification of land use
- Take decisive action for healthy freshwater, land and coastal ecosystems



Iconic Landscapes – Alpine environment

- 
- A wide-angle landscape photograph of an alpine environment. In the foreground, a small, clear blue river flows through a field of tall, dry, golden-brown grasses. The middle ground shows a vast, flat expanse of similar grassland. In the background, a range of rugged mountains is visible, with the higher peaks covered in snow and partially obscured by white clouds. The sky is a vibrant blue with scattered white clouds. The overall scene depicts a natural, yet potentially impacted, alpine landscape.
- land use clearance and intensification
 - fertiliser over use
 - human interaction - settlement
 - pest animals and plants
 - loss of regulatory protection

Iconic Landscapes – Floodplains

- intensive farming, irrigation, fertiliser
- vegetation clearance
- urban settlement
- constraining flood protection assets
- national infrastructure

Iconic Landscapes – Coastal Environment

- sea level rise, flooding
- sedimentation
- loss of habitat
- pest animals and plants



The BIG Issues

- 
- flood management
 - pest plant and animal management
 - gravel extraction
 - indigenous biodiversity health and management

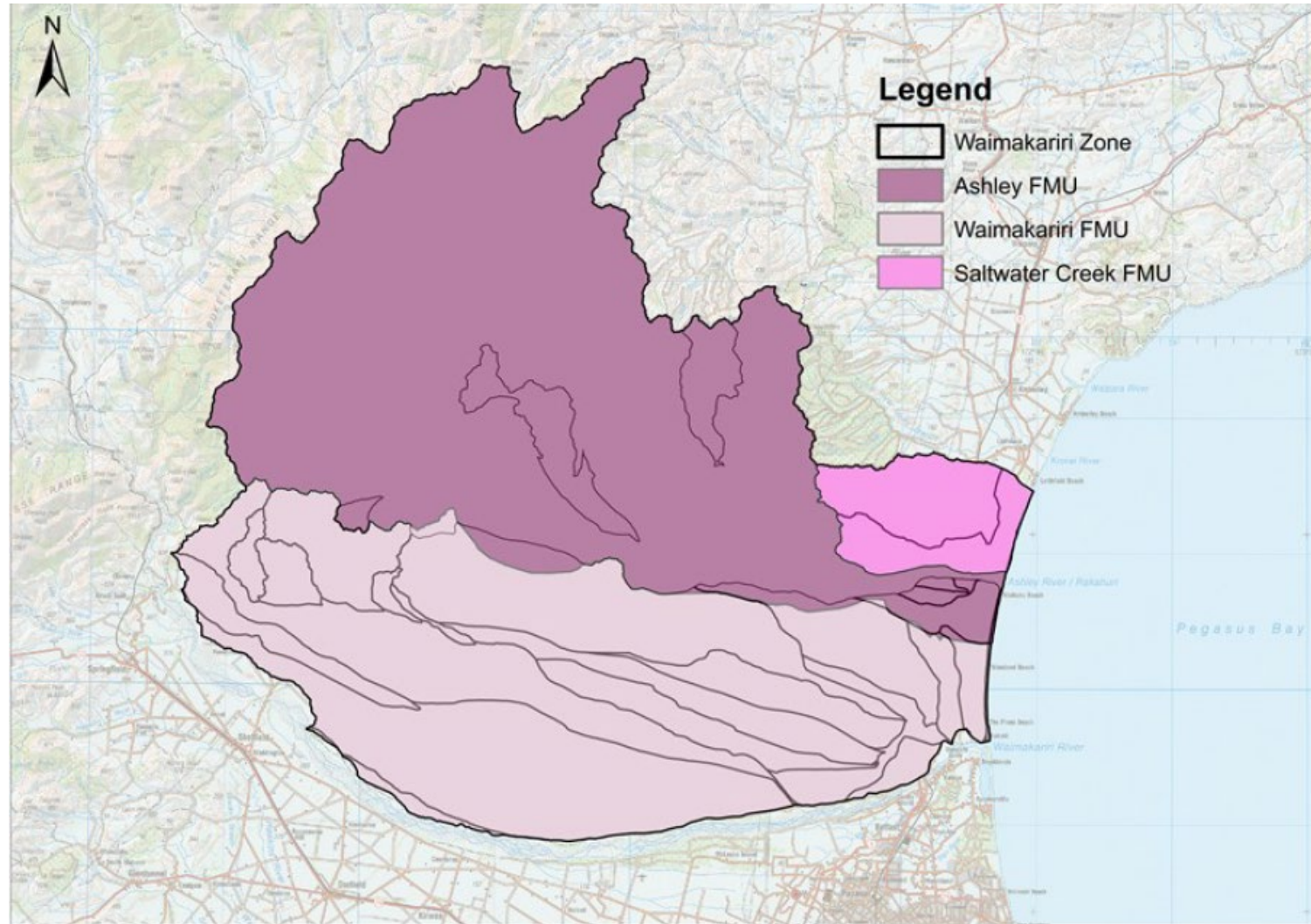
NPS FM – Te Mana o te Wai



NPS FM requirements

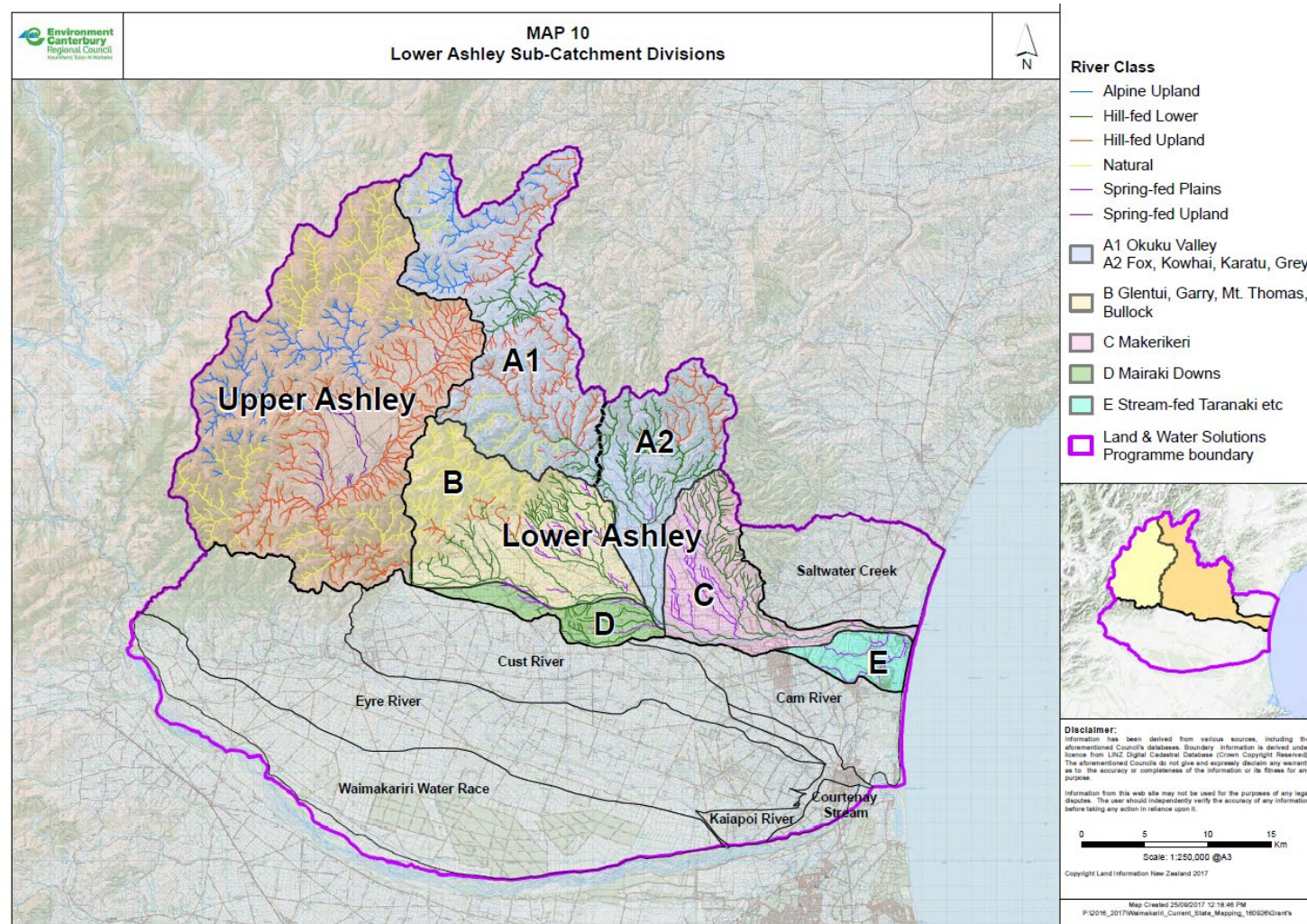
Manage freshwater, and land use and development, in catchments in an integrated and sustainable way to avoid, remedy, or mitigate adverse effects including cumulative effects, on the health and well-being of water bodies, freshwater ecosystems, and receiving environments.

Ashley River/Rakahuri FMU



A Vision for Catchment Management

Ashley River/Rakahuri



The Plains and Flood Management



Ashburton Flood 31 May 2021

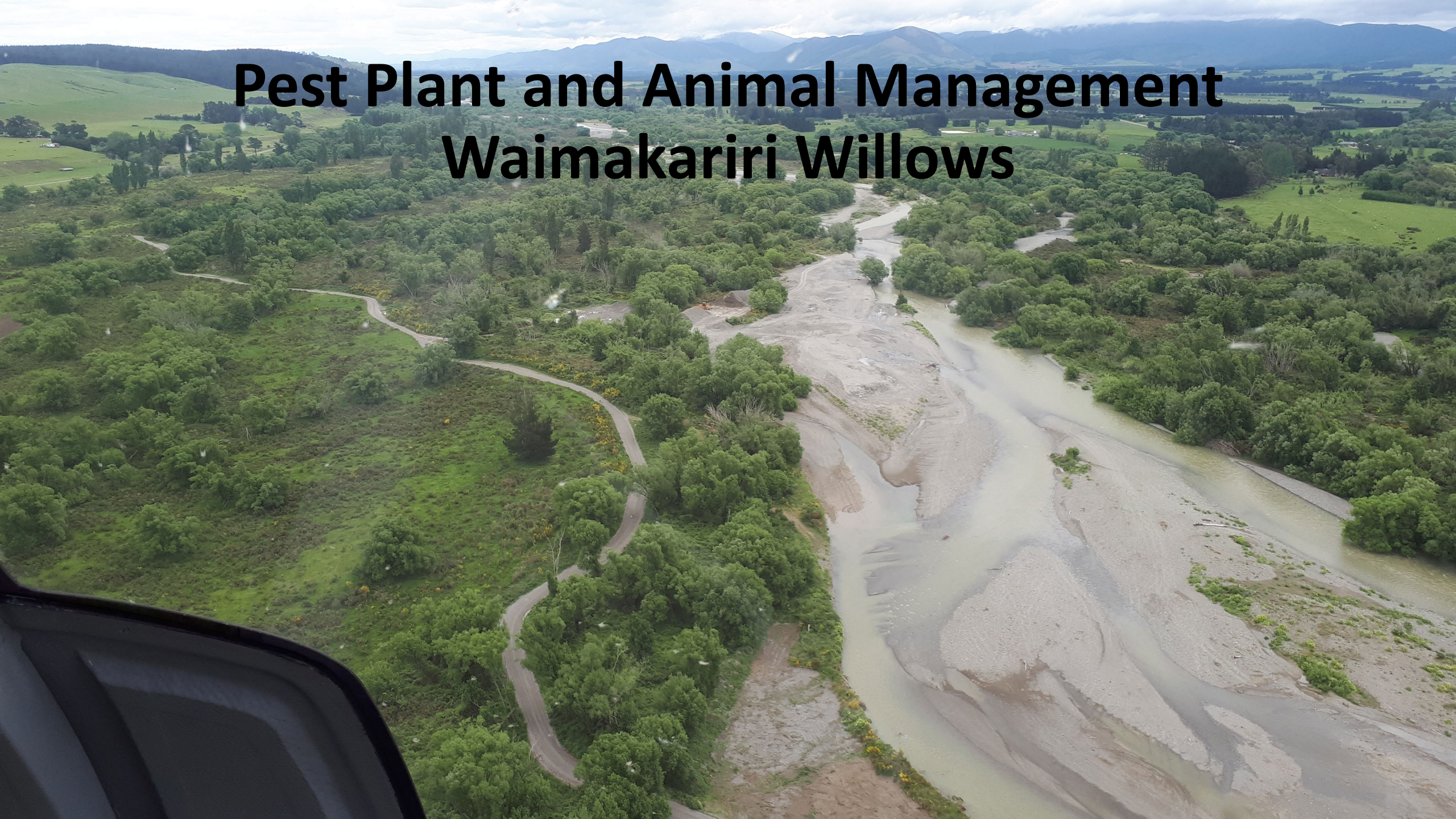
West of Shearers Rd – North Branch



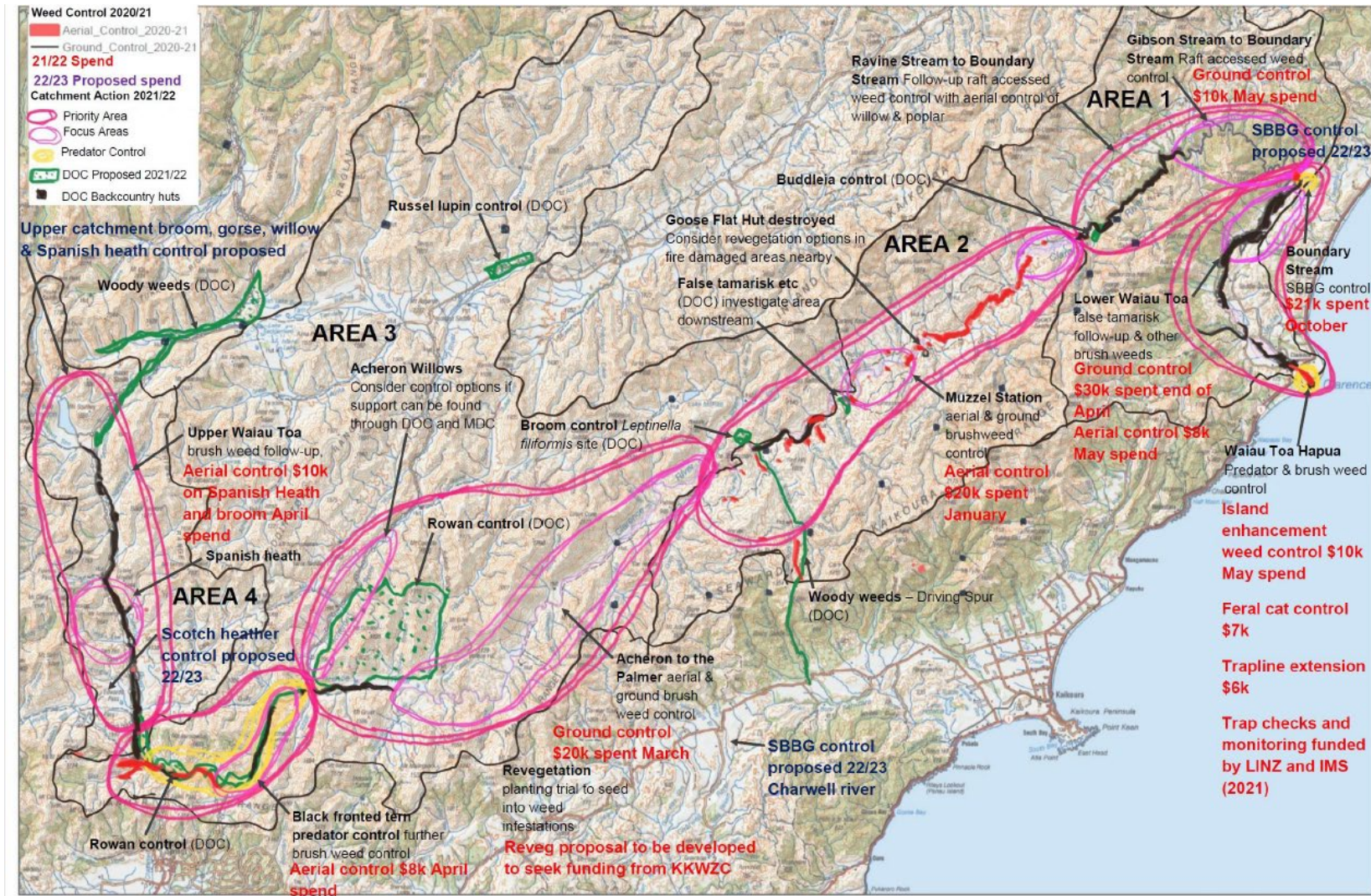
Thompsons Track – North Branch



Pest Plant and Animal Management Waimakariri Willows



Pest Plant and Animal Management Waiau Toa Catchment Plan 2021-2024



Politics



Summary



The future...

- Council strategic direction & Long-Term Plan- continuing momentum
- Ongoing leadership role / co-design Ngāi Tahu Papatipu Rūnanga
- RMA changes – NPS FM Te Mana o te Wai
- Climate change – River Strategies, ki uta ki tai, catchment management
- Relationships and partnerships
- Braided River Revival
- Ongoing work on the ground