

# 2 Important Areas for New Zealand Seabirds

---

## Sites on Land

Rivers, estuaries, coastal  
lagoons & harbours



**Forest & Bird**  
GIVING NATURE A VOICE



# IMPORTANT AREAS FOR NEW ZEALAND SEABIRDS



This document has been prepared for Forest & Bird by Chris Gaskin, IBA Project Coordinator (NZ).

The Royal Forest & Bird Protection Society of New Zealand  
Level One, 90 Ghuznee Street  
PO Box 631  
Wellington 6140  
NEW ZEALAND

This report is available from the Forest & Bird website in pdf form.

© Copyright February 2016, Forest & Bird

## Contributors

The following individuals have contributed to the profiles in this document in a variety of ways, including supply of data and information about seabirds, and reviewing draft material, site profiles, species lists and site maps.

Nick Allen, Tim Barnard, Tony Beauchamp, Mike Bell, Mark Bellingham, Robin Blyth, Phil Bradfield, John Cheyne, Wynston Cooper, Andrew Crossland, Philippa Crisp, Paul Cuming, John Dowding, Hannah Edmonds, Lloyd Esler, Julian Fitter, Peter Frost, Mel Galbraith, Liz Garson, Peter Gaze, Andrew Grant, Tony Habraken, Kate Hand, Ken Hughey, Elaine Lagnaz, Chris Lalas, Peter Langlands, David Lawrie, Eila Lawson, Nick Ledgard, Nikki McArthur, Rachel McClellan, Craig McKenzie, Bruce McKinlay, Michael McSweeney, David Melville, Gary Melville, Mark O'Brien, Colin O'Donnell, Gwenda Pulham, Aalbert Rebergen, Phil Rhodes, Adrien Riegen, Neil Robertson, Paul Sagar, Frances Schmechel, Rob Schuckard, Ian Southey, Kate Steffens, Graeme Taylor, Gillian Vaughan, Jan Walker, Susan Waugh, David Wilson, Kerry-Jayne Wilson, Steve Wood, Keith Woodley.

Cover design: Danielle McBride, Paradigm Associates, Auckland

Front cover: Rachel McLellan (Black-billed Gulls), Craig McKenzie (Black-fronted Tern)

Back cover: Frederic Pelsy (Ahuriri River)

Recommended citation: Forest & Bird (2016). *New Zealand Seabirds: Sites on Land, Rivers, estuaries, coastal lagoons & harbours*. The Royal Forest & Bird Protection Society of New Zealand, Wellington, New Zealand.

NZ050	Clarence Acheron Saxton Rivers	Marlborough
-------	--------------------------------	-------------

Location	New Zealand, Marlborough
Central coordinates	42.393291°S, 172.968235°E (Clarence Acheron confluence)
IBA criteria	A1
Area	7683 ha
Altitude	400 - 1200m
Year of Assessment	2013

#### Populations of IBA trigger species:

Species	Season	Period	Population estimate (pairs)	IBA criteria	IUCN cat.	NZ Threat Class.
Black-billed Gull	Breeding		No counts	A1	EN	Nationally Critical
Black-fronted Tern	Breeding	1992-2011	111-269	A1, A4i	EN	Nationally Vulnerable

**Ornithological information:** Besides the trigger species the following are confirmed or likely to be breeding: Canada Goose, Mallard, Grey Duck, Australasian Harrier, NZ Falcon, South Island Pied Oystercatcher, Pied Stilt, Banded Dotterel, Spur-winged Plover, Southern Black-backed Gull, NZ Kingfisher, Welcome Swallow, NZ Pipit, Grey Warbler, Silvereye, Sky-lark, Blackbird, Song Thrush, Yellowhammer, Chaffinch, Greenfinch, Goldfinch, Redpoll, House Sparrow, Starling, Australian Magpie.

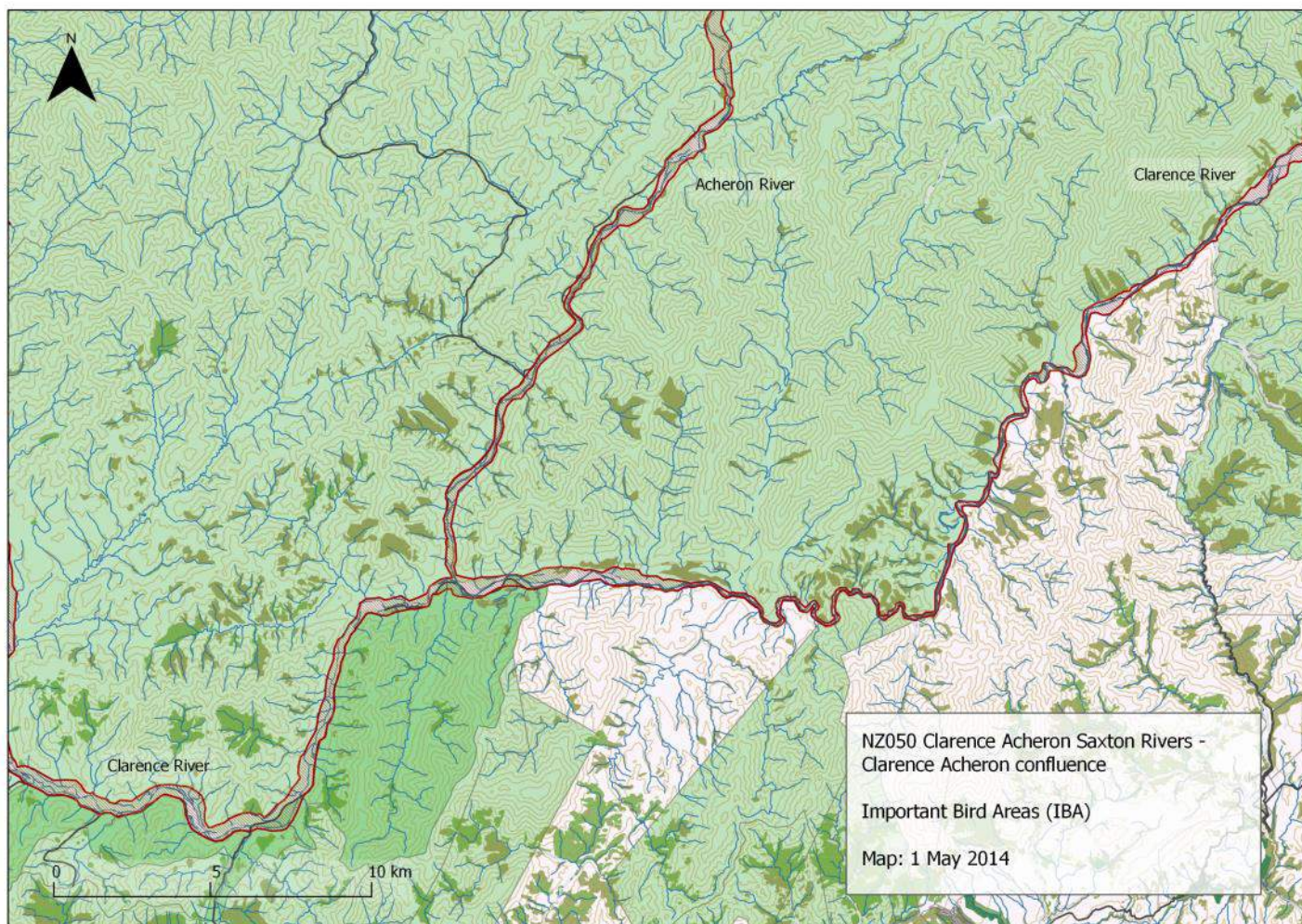
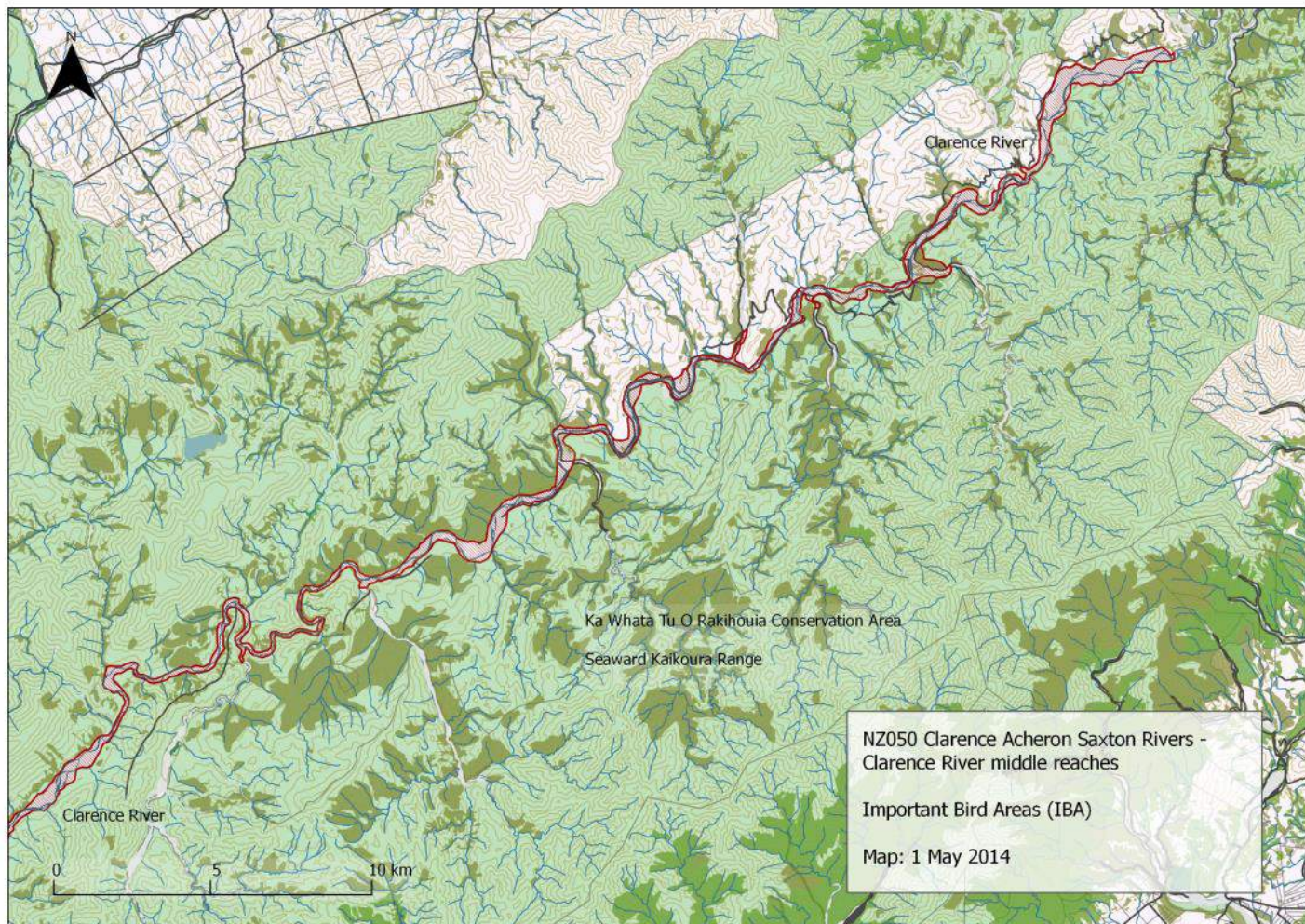
Protected area	Designation	Relationship with IBA
Ka Whata Tu o Rakihouia <sup>1</sup>	Conservation Park	Protected area overlaps with site
Molesworth <sup>1</sup>	Recreation Reserve	Protected area overlaps with site

<sup>1</sup> These conservation areas, together with The Hassock Conservation Area and St James Conservation Area, border large sections of the Clarence, Acheron and Saxton Rivers.

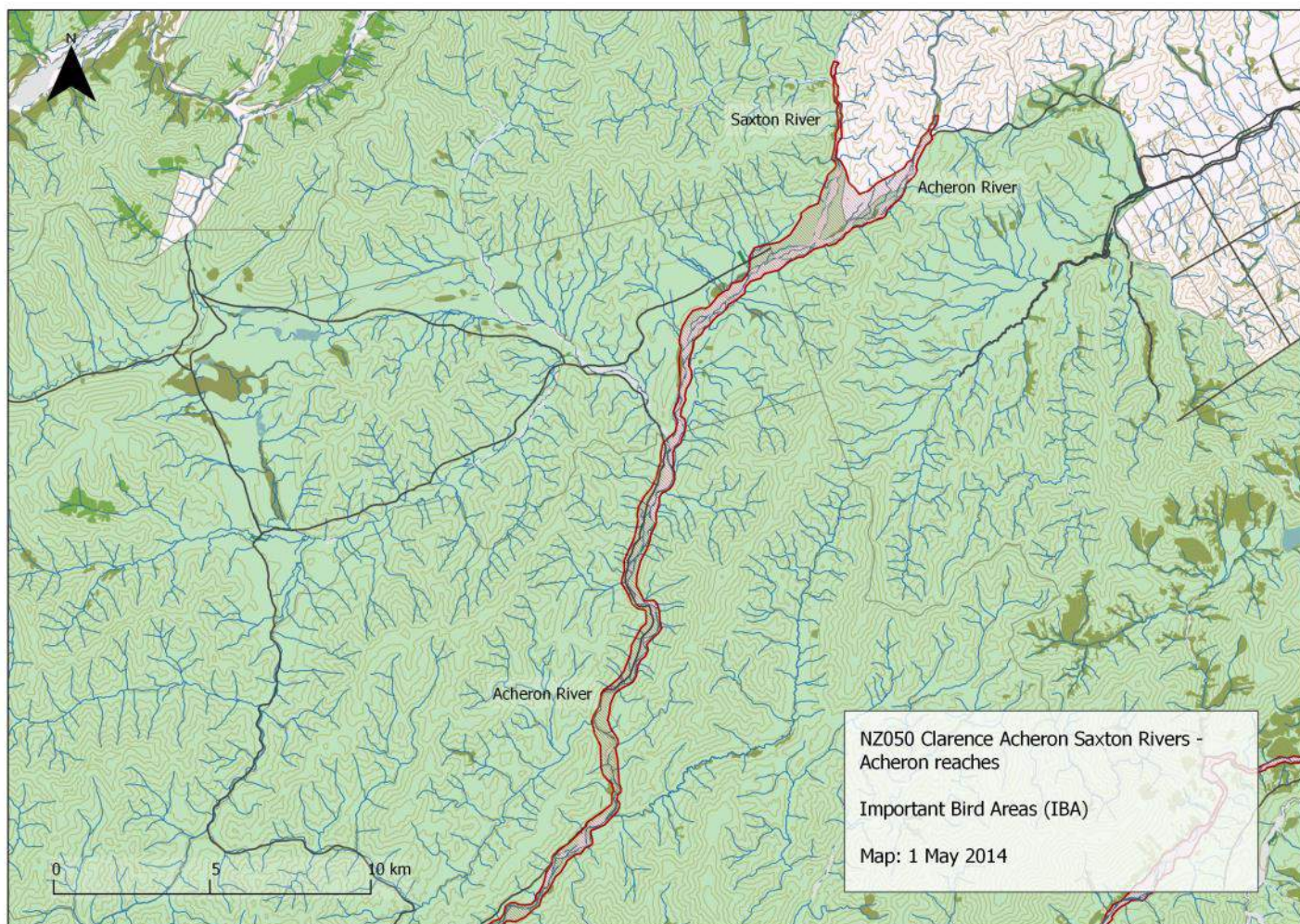
There are also extensive Marginal Strip on each of the rivers and tributaries.

IUCN Habitat	Habitat detail	Extent (% of site)
Wetlands (inland)	Permanent Rivers; River Gravel Beds; Small Swamps	Major
Introduced Vegetation	Broom, gorse, pasture grasses & rank weeds, shelter and ornamental tress (homesteads)	Major
Grasslands	Tussock on river flats (upper valleys)	Major
Shrubland	Manuka, matagouri ( <i>Discaria toumatou</i> ), bracken	Major











---

**Threats to the site (pressure) - IUCN Classifications**

---

Threat Level	Notes	Timing	Scope	Severity
Invasive & other problematic species, genes & diseases	Invasive alien species - mustelids, cats, rats, hedgehogs	Happening now	Some of area/ population (10-49%)	Moderate to rapid deterioration
Human intrusions and disturbance	Recreational activities by river users - includes dogs.	Happening now	Some of area/ population (10-49%)	Slow but significant deterioration
Natural system modifications	Weed encroachment on nesting sites	Happening now	Some of area/ population (10-49%)	Slow but significant deterioration
Climate change and severe weather	Floods	Likely in short term (within 4 years)	Some of area/ population (10-49%)	Moderate to rapid deterioration

---

**References:**

O'Donnell, C.F.J., Hoare, J.M. 2011. Meta-analysis of status and trends in breeding populations of black-fronted terns (*Chlidonias albobriatus*) 1962-2008. *New Zealand Journal of Ecology* 35: 32-43

Robertson, C.J.R., Hyvönen, P., Fraser, M.J., Pickard, C.R. 2007. *Atlas of bird distribution in New Zealand 1999-2004*. Ornithological Society of New Zealand, Inc. Wellington.

Steffens, K. 2012. Helicopter surveys of black-fronted terns in Marlborough, New Zealand. Internal report DOCDM-892932. Department of Conservation, Nelson Lakes.



**Forest & Bird**  
GIVING NATURE A VOICE

[www.forestandbird.org.nz/important-bird-areas](http://www.forestandbird.org.nz/important-bird-areas)

Photo: Frederic Pelsy  
Front: Rachel McClellan, Craig McKenzie