

# 2 Important Areas for New Zealand Seabirds

---

## Sites on Land

Rivers, estuaries, coastal  
lagoons & harbours



**Forest & Bird**  
GIVING NATURE A VOICE



# IMPORTANT AREAS FOR NEW ZEALAND SEABIRDS



This document has been prepared for Forest & Bird by Chris Gaskin, IBA Project Coordinator (NZ).

The Royal Forest & Bird Protection Society of New Zealand  
Level One, 90 Ghuznee Street  
PO Box 631  
Wellington 6140  
NEW ZEALAND

This report is available from the Forest & Bird website in pdf form.

© Copyright February 2016, Forest & Bird

## Contributors

The following individuals have contributed to the profiles in this document in a variety of ways, including supply of data and information about seabirds, and reviewing draft material, site profiles, species lists and site maps.

Nick Allen, Tim Barnard, Tony Beauchamp, Mike Bell, Mark Bellingham, Robin Blyth, Phil Bradfield, John Cheyne, Wynston Cooper, Andrew Crossland, Philippa Crisp, Paul Cuming, John Dowding, Hannah Edmonds, Lloyd Esler, Julian Fitter, Peter Frost, Mel Galbraith, Liz Garson, Peter Gaze, Andrew Grant, Tony Habraken, Kate Hand, Ken Hughey, Elaine Lagnaz, Chris Lalas, Peter Langlands, David Lawrie, Eila Lawson, Nick Ledgard, Nikki McArthur, Rachel McClellan, Craig McKenzie, Bruce McKinlay, Michael McSweeney, David Melville, Gary Melville, Mark O'Brien, Colin O'Donnell, Gwenda Pulham, Aalbert Rebergen, Phil Rhodes, Adrien Riegen, Neil Robertson, Paul Sagar, Frances Schmechel, Rob Schuckard, Ian Southey, Kate Steffens, Graeme Taylor, Gillian Vaughan, Jan Walker, Susan Waugh, David Wilson, Kerry-Jayne Wilson, Steve Wood, Keith Woodley.

Cover design: Danielle McBride, Paradigm Associates, Auckland

Front cover: Rachel McLellan (Black-billed Gulls), Craig McKenzie (Black-fronted Tern)

Back cover: Frederic Pelsy (Ahuriri River)

Recommended citation: Forest & Bird (2016). *New Zealand Seabirds: Sites on Land, Rivers, estuaries, coastal lagoons & harbours*. The Royal Forest & Bird Protection Society of New Zealand, Wellington, New Zealand.

NZ055	Hurunui River	Canterbury
-------	---------------	------------

Location	New Zealand, Canterbury
Central coordinates	42.872442°S, 172.768593°E (Hurunui bridge SH7)
IBA criteria	A1, A4ii
Area	9123 ha
Altitude	0 - 715m
Year of Assessment	2013

**Populations of IBA trigger species:**

Species	Season	Period	Population estimate	IBA criteria	IUCN cat.	NZ Threat Class.
Black-billed Gull	Breeding	2008-2014	528-1,083	A1, A4i	EN	Nationally Critical
Black-fronted Tern	Breeding	2006-2010	211-442 (nests)	A1, A4i	EN	Nationally Vulnerable
Wrybill	Breeding	2009-2010	2-10 (nests)	A1	VU	Nationally Vulnerable

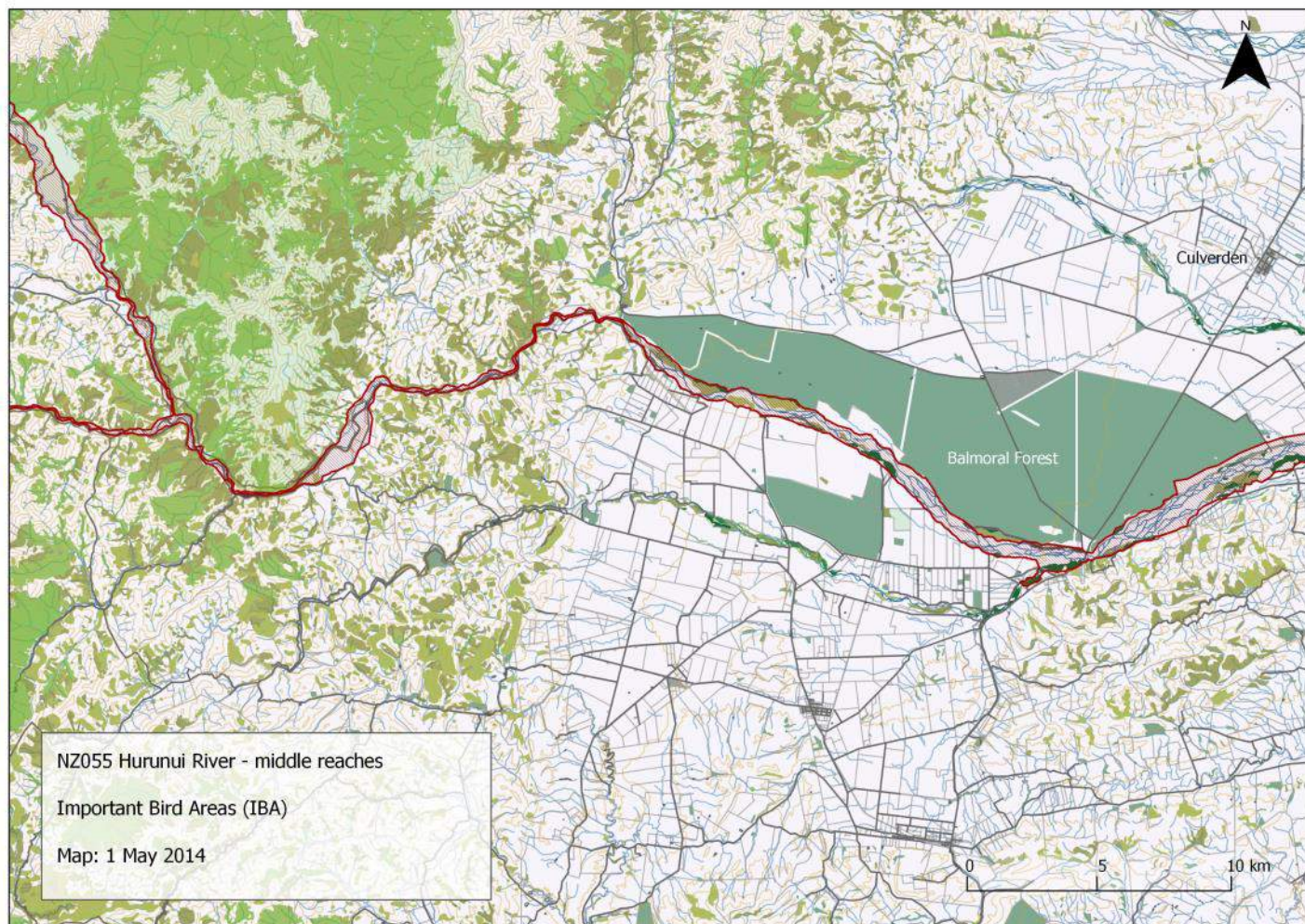
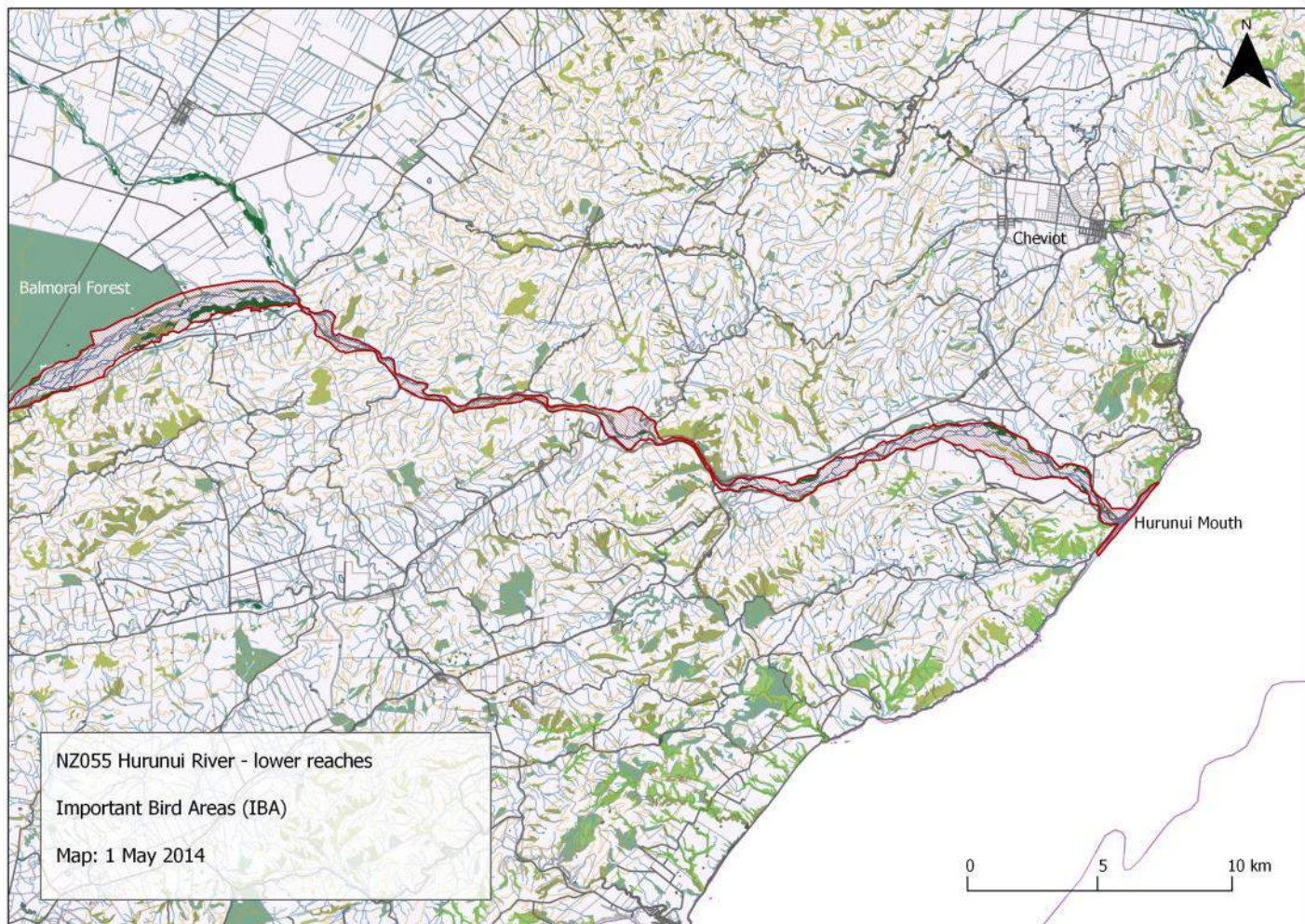
**Ornithological information:** Besides the trigger species the following species are confirmed or likely to be breeding: White-faced Heron, Australasian Harrier, Canada Goose, Paradise Shelduck, Mallard, Grey Teal, Californian Quail, Pukeko, South Island Pied Oystercatcher, Variable Oystercatcher, Pied Stilt, Banded Dotterel, Spur-winged Plover, Southern Black-backed Gull, Red-billed Gull, NZ Pigeon, Rock Pigeon, Shining Cuckoo, White-fronted Tern, NZ Kingfisher, Welcome Swallow, NZ Pipit, Grey Warbler, South Island Fantail, Silvereye, Bellbird, Skylark, Hedge Sparrow, Blackbird, Song Thrush, Yellowhammer, Chaffinch, Greenfinch, Goldfinch, Redpoll, House Sparrow, Starling, Australian Magpie. Other species recorded: Black Shag, Little Shag.

Great Spotted Kiwi, Kaka, Kea, Yellow-crowned Parakeet, Orange-fronted Parakeet and Yellowhead occur in forest in the upper reaches - especially in the South Branch. NZ Scaup and likely other marsh species are at Lake Sumner, with Australasian Crested Grebes at nearby Lakes Sheppard and Taylor.

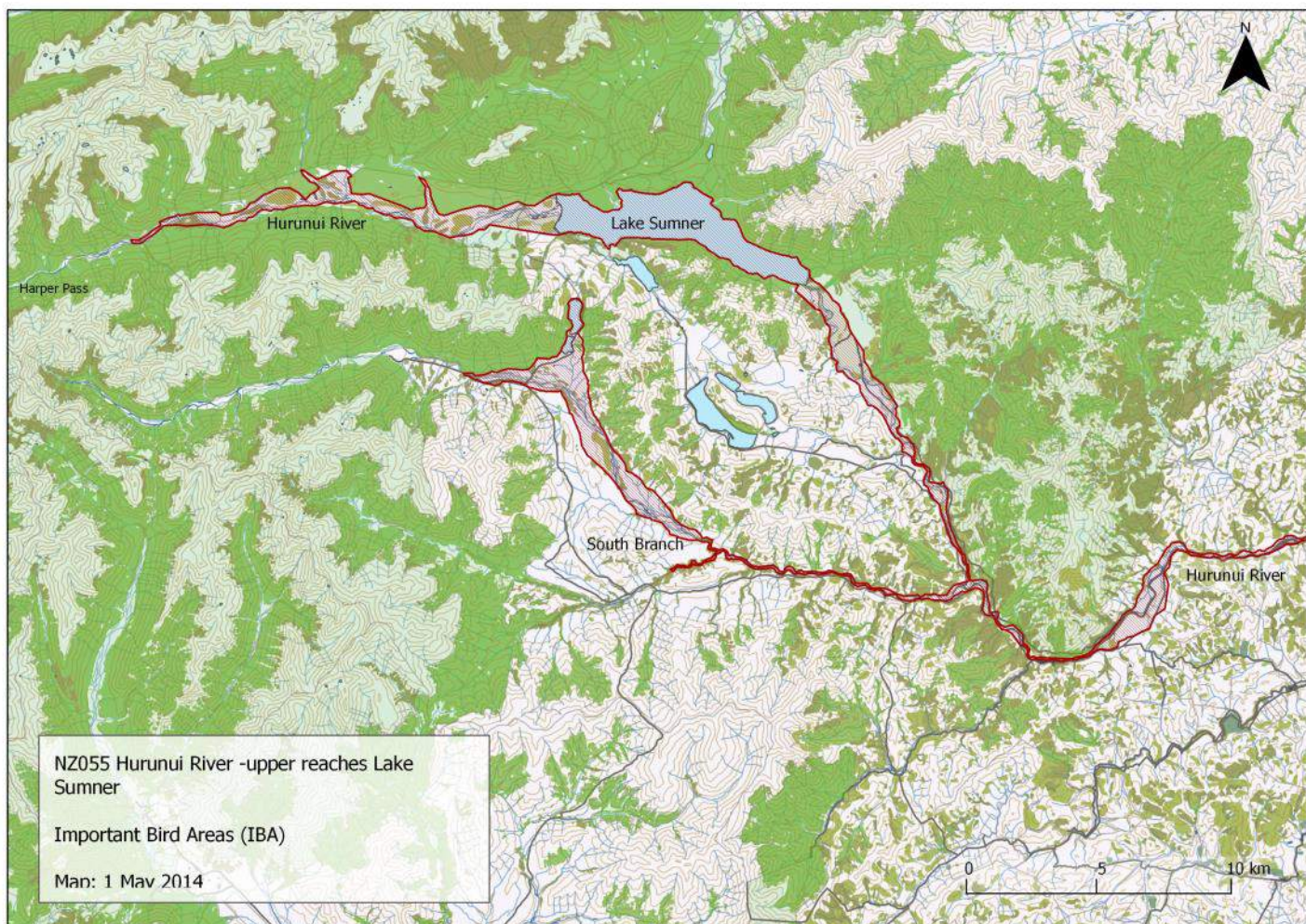
Protected area	Designation	Relationship with IBA
Pacific Ocean Foreshore Napenape	Conservation Area	Protected area overlaps with site
Hurunui	Marginal Strip	Protected area contained within site
Hurunui River Kairn Brock	Conservation Area	Protected area contained within site
South Branch Hurunui	Marginal Strip	Protected area contained within site

The IBA includes areas (mainly open river flats) of the Lake Sumner Forest Park and Head of Lake Sumner Conservation Area which it borders.









IUCN Habitat	Habitat detail	Extent (% of site)
Marine Intertidal	Shingle Shoreline	Minor
Marine Coastal/Supratidal	Rivermouth (Estuary and Spit)	Major
Wetlands (inland)	Permanent Rivers; Extensive River Gravel Beds (Braided River); Small Swamps	Major
Introduced Vegetation	Broom, gorse, pasture grasses & rank weeds, willow margins	Major
Grasslands	Tussock on river flats (upper reaches)	Major
Shrubland	Kanuka, matagouri ( <i>Discaria toumatou</i> ), bracken	Major
Forest	Southern beech on some river flats (upper reaches) and along margins of IBA	Minor

#### Threats to the site (pressure) - IUCN Classifications

Threat Level	Notes	Timing	Scope	Severity
Invasive & other problematic species, genes & diseases	Invasive alien species - mustelids, cats, rats, hedgehogs	Happening now	Some of area/ population (10-49%)	Moderate to rapid deterioration
Human intrusions and disturbance	Recreational activities by river users - includes dogs.	Happening now	Some of area/ population (10-49%)	Slow but significant deterioration

---

**Threats to the site (pressure) - contd.**

---

Threat Level	Notes	Timing	Scope	Severity
Natural system modifications	Water management/use - abstraction of ground water (agricultural use)	Happening now	Some of area/ population (10-49%)	Slow but significant deterioration
Pollution	Agricultural & forestry effluents - nutrient loads (lakes and rivers)	Happening now	Some of area/ population (10-49%)	No or imperceptible deterioration
Natural system modifications	Weed encroachment on nesting sites (rivers)	Happening now	Some of area/ population (10-49%)	Slow but significant deterioration
Climate change and severe weather	Floods	Likely in short term (within 4 years)	Some of area/ population (10-49%)	Moderate to rapid deterioration

---

**References:**

DOC River Survey Database 2013.

O'Donnell, C.F.J. 2000. The significance of river and open water habitats for indigenous birds in Canterbury, New Zealand. Environment Canterbury Unpublished Report U00/37. Christchurch, Environment Canterbury.

O'Donnell, C.F.J., Hoare, J.M. 2011. Meta-analysis of status and trends in breeding populations of black-fronted terns (*Chlidonias albobristatus*) 1962-2008. *New Zealand Journal of Ecology* 35: 32-43

Palmer, P. 2013. Compilation of "Summary of intrinsic values" chapters from Canterbury Conservancy's intrinsic values catchment reports: Hurunui-Waiau Zone. Department of Conservation, Christchurch.

Robertson, C.J.R., Hyvönen, P., Fraser, M.J., Pickard, C.R. 2007. *Atlas of bird distribution in New Zealand 1999-2004*. Ornithological Society of New Zealand, Inc. Wellington.





**Forest & Bird**  
GIVING NATURE A VOICE

[www.forestandbird.org.nz/important-bird-areas](http://www.forestandbird.org.nz/important-bird-areas)

Photo: Frederic Pelsy  
Front: Rachel McClellan, Craig McKenzie