

2 Important Areas for New Zealand Seabirds

Sites on Land

Rivers, estuaries, coastal
lagoons & harbours



Forest & Bird
GIVING NATURE A VOICE



IMPORTANT AREAS FOR NEW ZEALAND SEABIRDS



This document has been prepared for Forest & Bird by Chris Gaskin, IBA Project Coordinator (NZ).

The Royal Forest & Bird Protection Society of New Zealand
Level One, 90 Ghuznee Street
PO Box 631
Wellington 6140
NEW ZEALAND

This report is available from the Forest & Bird website in pdf form.

© Copyright February 2016, Forest & Bird

Contributors

The following individuals have contributed to the profiles in this document in a variety of ways, including supply of data and information about seabirds, and reviewing draft material, site profiles, species lists and site maps.

Nick Allen, Tim Barnard, Tony Beauchamp, Mike Bell, Mark Bellingham, Robin Blyth, Phil Bradfield, John Cheyne, Wynston Cooper, Andrew Crossland, Philippa Crisp, Paul Cuming, John Dowding, Hannah Edmonds, Lloyd Esler, Julian Fitter, Peter Frost, Mel Galbraith, Liz Garson, Peter Gaze, Andrew Grant, Tony Habraken, Kate Hand, Ken Hughey, Elaine Lagnaz, Chris Lalas, Peter Langlands, David Lawrie, Eila Lawson, Nick Ledgard, Nikki McArthur, Rachel McClellan, Craig McKenzie, Bruce McKinlay, Michael McSweeney, David Melville, Gary Melville, Mark O'Brien, Colin O'Donnell, Gwenda Pulham, Aalbert Rebergen, Phil Rhodes, Adrien Riegen, Neil Robertson, Paul Sagar, Frances Schmechel, Rob Schuckard, Ian Southey, Kate Steffens, Graeme Taylor, Gillian Vaughan, Jan Walker, Susan Waugh, David Wilson, Kerry-Jayne Wilson, Steve Wood, Keith Woodley.

Cover design: Danielle McBride, Paradigm Associates, Auckland

Front cover: Rachel McLellan (Black-billed Gulls), Craig McKenzie (Black-fronted Tern)

Back cover: Frederic Pelsy (Ahuriri River)

Recommended citation: Forest & Bird (2016). *New Zealand Seabirds: Sites on Land, Rivers, estuaries, coastal lagoons & harbours*. The Royal Forest & Bird Protection Society of New Zealand, Wellington, New Zealand.

NZ100	Oreti River	Southland
-------	-------------	-----------

Location	New Zealand, Southland
Central coordinates	45.716668°S, 168.430796°E (Lumsden bridge)
IBA criteria	A1, A4ii
Area	7,640 ha
Altitude	60 - 460m
Year of Assessment	2013

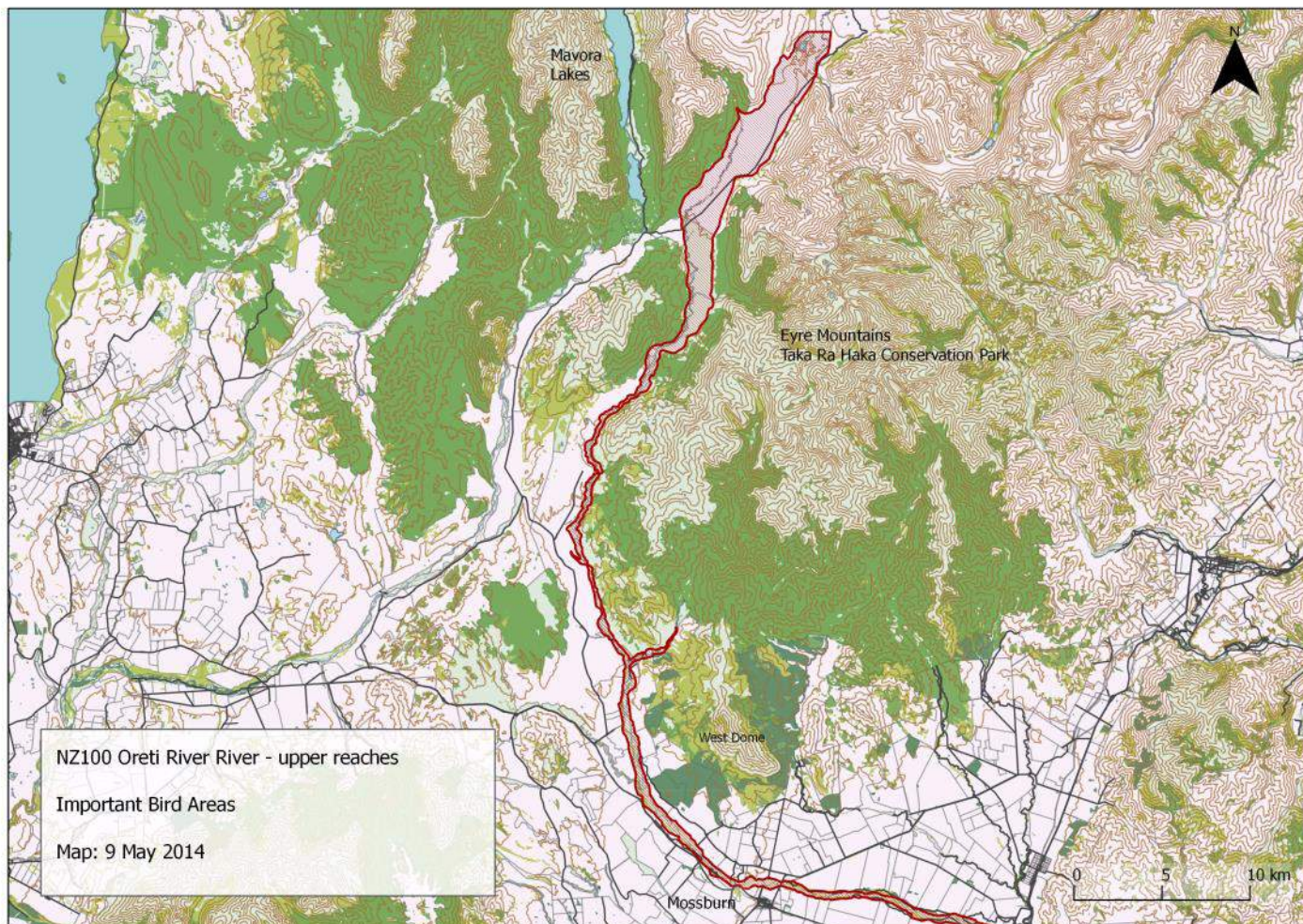
Populations of IBA trigger species:

Species	Season	Period	Population estimate	IBA criteria	IUCN cat.	NZ Threat Class.
Black-billed Gull	Breeding	1949-2006	7,198- 28,324	A1, A4i	EN	Nationally Critical
Black-fronted Tern	Breeding	1986	298 (individuals)	A1, A4i	EN	Nationally Vulnerable

Ornithological information: Besides the trigger species the following species are confirmed or likely to be breeding: Black Shag, Little Shag, White-faced Heron, Canada Goose, Paradise Shelduck, Grey Teal, Mallard, Grey Duck, Australasian Harrier, South Island Pied Oystercatcher, Pied Stilt, Banded Dotterel, Black-fronted Dotterel, Spur-winged Plover, Southern Black-backed Gull, Rock Pigeon, NZ Kingfisher, Welcome Swallow, NZ Pipit, Shining Cuckoo, South Island Fantail, Silvereye, Bellbird, Skylark, Hedge Sparrow, Blackbird, Song Thrush, Yellowhammer, Chaffinch, Greenfinch, Goldfinch, Redpoll, House Sparrow, Starling, Australian Magpie.

Protected area	Designation	Relationship with IBA
Oreti River, Centre Bush	Conservation Area	Protected area contained within site
Oreti River, South Benmore	Conservation Area	Protected area contained within site
Oreti River, Dipton (incl. South Dipton)	Conservation Area	Protected area contained within site
Oreti River	Marginal Strip	Protected area overlaps site
Oreti River, Lumsden	Conservation Area	Protected area contained within site
Oreti River, Lowther	Conservation Area	Protected area contained within site
Oreti River, Mossburn	Conservation Area	Protected area contained within site
Coal Hill Windley River	Conservation Area	Protected area overlaps site
Von River	Marginal Strip	Protected area overlaps site

The IBA borders with and includes areas of the Snowdon Forest Conservation Area and Eyre Mountains/Taka Ra Haka Conservation Park.



IUCN Habitat	Habitat detail	Extent (% of site)
Wetlands (inland)	Permanent Rivers; Extensive River Gravel Beds	Major
Introduced Vegetation	Broom, gorse, pasture grasses & rank weeds, willow margins	Major
Shrubland	Manuka, matagouri (<i>Discaria toumatou</i>), bracken	Major
Forest	Southern beech on river flats and along margins of the IBA.	Minor

Black-billed Gulls, and to a lesser extent Black-fronted Terns will feed on adjacent pasture, especially during or immediately following ploughing. They will also hawk flying insects over pasture, riverbeds and even forested areas.

Threats to the site (pressure) - IUCN Classifications

Threat Level	Notes	Timing	Scope	Severity
Invasive & other problematic species, genes & diseases	Invasive alien species - mustelids, cats, rats, hedgehogs	Happening now	Some of area/ population (10-49%)	Moderate to rapid deterioration
Human intrusions and disturbance	Recreational activities by river users - includes dogs.	Happening now	Some of area/ population (10-49%)	Slow but significant deterioration
Natural system modifications	Water management/use - abstraction of surface & ground water (agricultural use)	Happening now	Some of area/ population (10-49%)	Slow but significant deterioration
Pollution	Agricultural & forestry effluents - nutrient loads (rivers)	Happening now	Some of area/ population (10-49%)	Slow but significant deterioration
Natural system modifications	Weed encroachment on nesting sites (rivers)	Happening now	Some of area/ population (10-49%)	Slow but significant deterioration
Climate change and severe weather	Floods	Likely in short term (within 4 years)	Some of area/ population (10-49%)	Moderate to rapid deterioration

References:

Gaze, P.D. (compiler) 1988. Classified Summarised Notes, South Island, 1 July 1986 to 30 June 1987. *Notornis* 35: 311–323.

McClellan, R. 2008. The Ecology and Management of Southland's Black-billed Gulls. Thesis for the degree of Doctor of Philosophy, University of Otago, Dunedin. 253 pp.

O'Donnell, C.F.J., Hoare, J.M. 2011. Meta-analysis of status and trends in breeding populations of black-fronted terns (*Chlidonias albobristatus*) 1962-2008. *New Zealand Journal of Ecology* 35: 32-43

Black-billed Gulls feeding behind a tractor and plough near Mossburn.
Photo: Chris Gaskin





Forest & Bird
GIVING NATURE A VOICE

www.forestandbird.org.nz/important-bird-areas

Photo: Frederic Pelsy
Front: Rachel McClellan, Craig McKenzie