

2 Important Areas for New Zealand Seabirds

Sites on Land

Rivers, estuaries, coastal
lagoons & harbours



Forest & Bird
GIVING NATURE A VOICE



IMPORTANT AREAS FOR NEW ZEALAND SEABIRDS



This document has been prepared for Forest & Bird by Chris Gaskin, IBA Project Coordinator (NZ).

The Royal Forest & Bird Protection Society of New Zealand
Level One, 90 Ghuznee Street
PO Box 631
Wellington 6140
NEW ZEALAND

This report is available from the Forest & Bird website in pdf form.

© Copyright February 2016, Forest & Bird

Contributors

The following individuals have contributed to the profiles in this document in a variety of ways, including supply of data and information about seabirds, and reviewing draft material, site profiles, species lists and site maps.

Nick Allen, Tim Barnard, Tony Beauchamp, Mike Bell, Mark Bellingham, Robin Blyth, Phil Bradfield, John Cheyne, Wynston Cooper, Andrew Crossland, Philippa Crisp, Paul Cuming, John Dowding, Hannah Edmonds, Lloyd Esler, Julian Fitter, Peter Frost, Mel Galbraith, Liz Garson, Peter Gaze, Andrew Grant, Tony Habraken, Kate Hand, Ken Hughey, Elaine Lagnaz, Chris Lalas, Peter Langlands, David Lawrie, Eila Lawson, Nick Ledgard, Nikki McArthur, Rachel McClellan, Craig McKenzie, Bruce McKinlay, Michael McSweeney, David Melville, Gary Melville, Mark O'Brien, Colin O'Donnell, Gwenda Pulham, Aalbert Rebergen, Phil Rhodes, Adrien Riegen, Neil Robertson, Paul Sagar, Frances Schmechel, Rob Schuckard, Ian Southey, Kate Steffens, Graeme Taylor, Gillian Vaughan, Jan Walker, Susan Waugh, David Wilson, Kerry-Jayne Wilson, Steve Wood, Keith Woodley.

Cover design: Danielle McBride, Paradigm Associates, Auckland

Front cover: Rachel McLellan (Black-billed Gulls), Craig McKenzie (Black-fronted Tern)

Back cover: Frederic Pelsy (Ahuriri River)

Recommended citation: Forest & Bird (2016). *New Zealand Seabirds: Sites on Land, Rivers, estuaries, coastal lagoons & harbours*. The Royal Forest & Bird Protection Society of New Zealand, Wellington, New Zealand.

NZ045	Wairau River	Marlborough
-------	--------------	-------------

Location	New Zealand, Marlborough
Central coordinates	41.717518°S, 173.095264°E (Wash Bridge, SH63)
IBA criteria	A1, (A4ii)
Area	131 sq km
Altitude	5 - 1200m
Year of Assessment	2013

Populations of IBA trigger species:

Species	Season	Period	Population estimate (pairs)	IBA criteria	IUCN cat.	NZ Threat Class.
Black-billed Gull	Breeding	1996-2014	178-466	A1, A4i	EN	Nationally Critical
Black-fronted Tern	Breeding	1980-2009	241-533	A1, A4i	EN	Nationally Vulnerable

Kea (VU) will venture into IBA from neighbouring areas where it is resident.

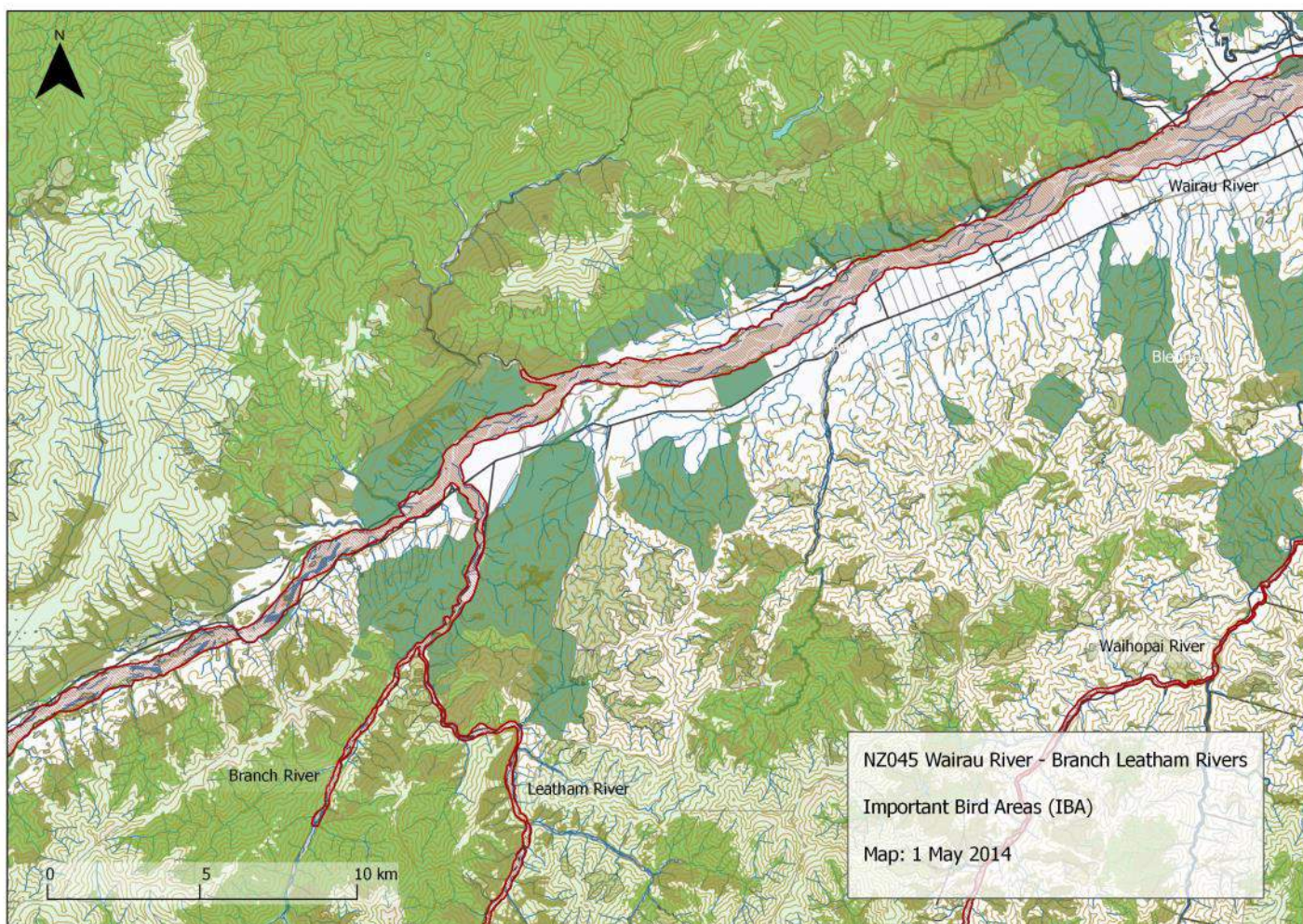
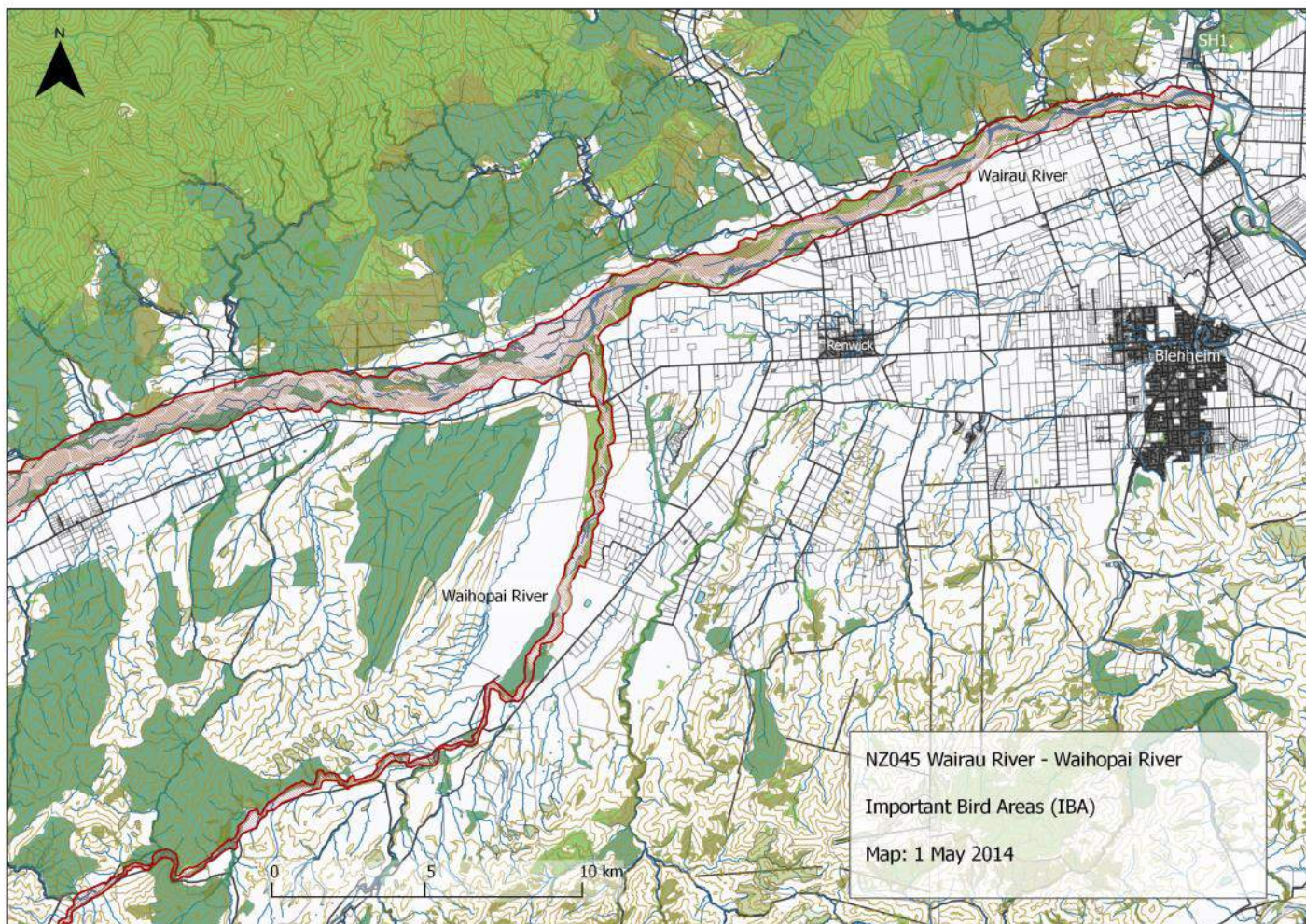
Ornithological information: Besides the trigger species the following are confirmed or likely to be breeding: Black Shag, Little Shag, White-faced Heron, Canada Goose, Paradise Shelduck, Mallard/Grey Duck, Australasian Harrier, Pukeko, South Island Pied Oystercatcher, Pied Stilt, Banded Dotterel, Black-fronted Dotterel, Spur-winged Plover, Shining Cuckoo, NZ Kingfisher, Rifleman, Welcome Swallow, NZ Pipit, Grey Warbler, South Island Fantail, Silvereye, Bellbird, Skylark, Blackbird, Song Thrush, Yellowhammer, Chaffinch, Greenfinch, Goldfinch, Redpoll, House Sparrow, Starling, Australian Magpie.

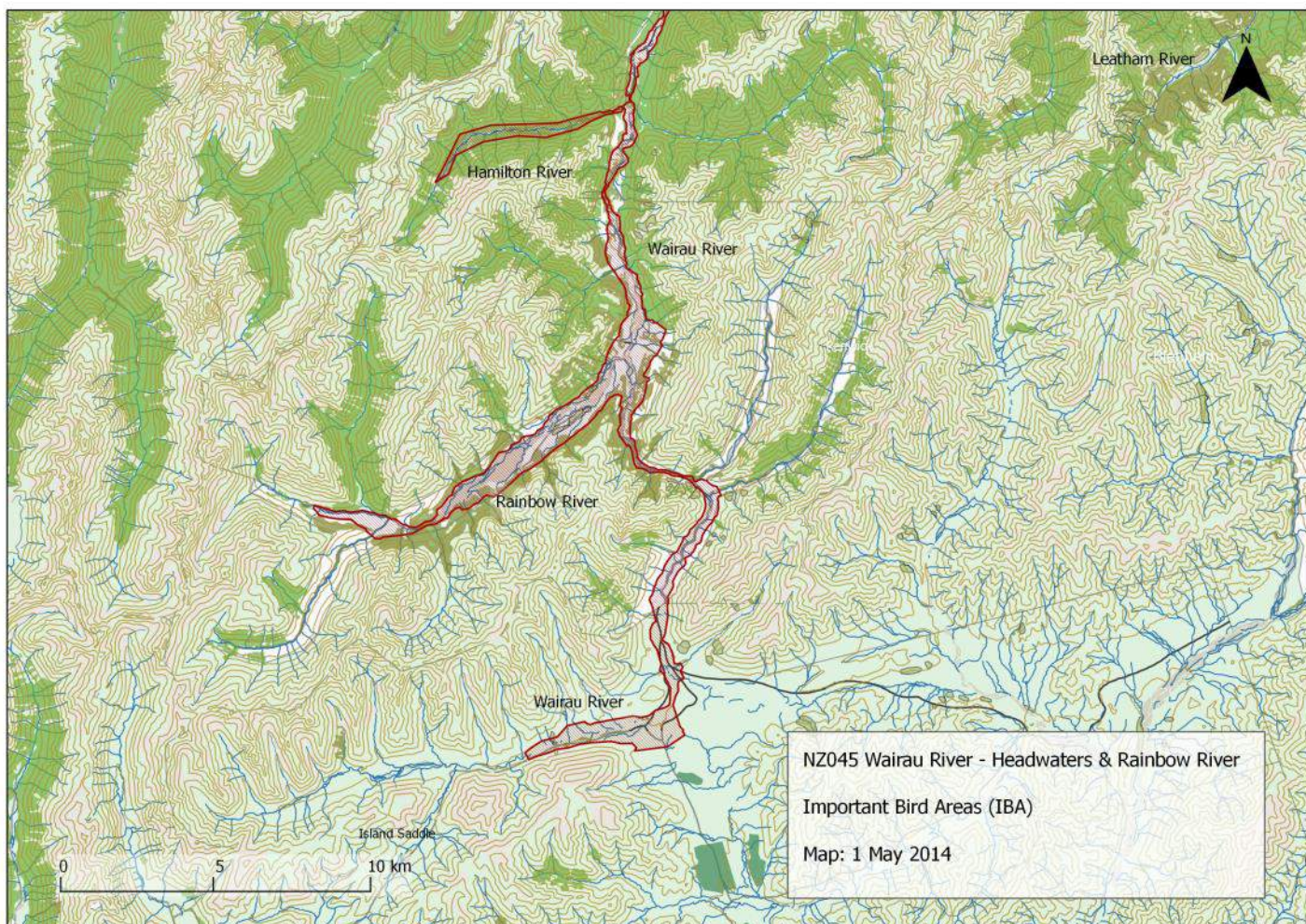
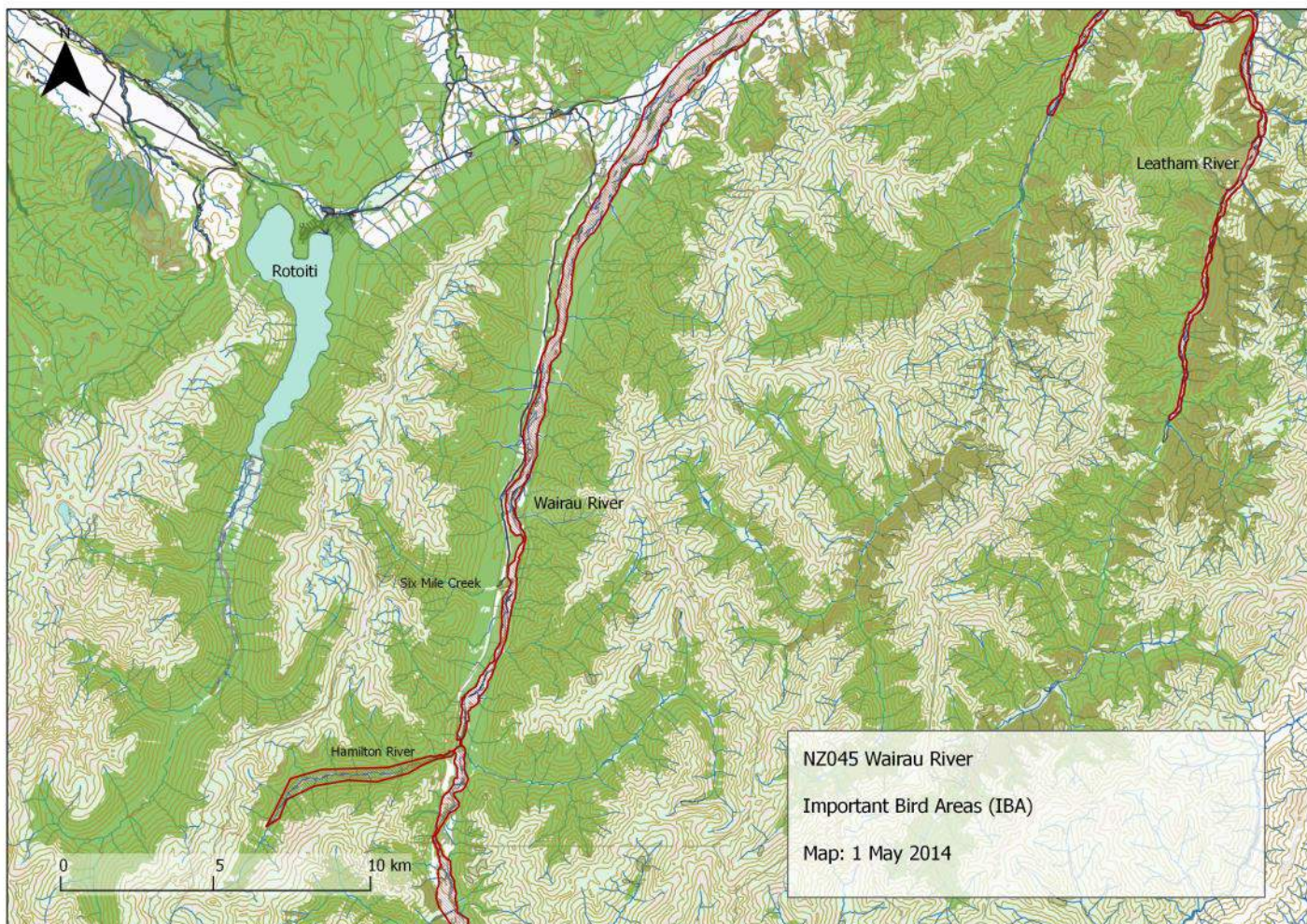
Other species recorded: NZ Falcon, Caspian Tern, NZ Pigeon, Brown Creeper, Tui.

Protected area	Designation	Relationship with IBA
----------------	-------------	-----------------------

The IBA includes small river sections of the following: Molesworth Recreation Reserve, Rainbow Run Conservation Reserve, Rainbow Conservation Area, Latham Conservation Area and Mount Richmond Forest Park.

Also Marginal Strip (including Riverbed and Local Purpose Reserves) in the Wairau Valley and its tributaries (Latham, Branch and Waihopai Rivers).





IUCN Habitat	Habitat detail	Extent (% of site)
Wetlands (inland)	Permanent Rivers; Extensive River Gravel Beds (Braided River); Bogs, small swamps	Major
Introduced Vegetation	Lupin, broom, gorse, pasture grasses & rank weeds; Willow margins	Major
Grasslands	Tussock on river flats (upper valleys)	Minor
Shrubland	Kanuka, matagouri (<i>Discaria toumatou</i>), bracken	Major
Forest	Southern beech forest on river flats (margins)	Minor

Threats to the site (pressure) - IUCN Classifications

Threat Level	Notes	Timing	Scope	Severity
Invasive & other problematic species, genes & diseases	Invasive alien species - mustelids, cats, rats, hedgehogs	Happening now	Some of area/ population (10-49%)	Moderate to rapid deterioration
Human intrusions and disturbance	Recreational activities by river users - includes dogs.	Happening now	Some of area/ population (10-49%)	Slow but significant deterioration
Natural system modifications	Water management/use - abstraction of ground water (agricultural use)	Happening now	Some of area/ population (10-49%)	Slow but significant deterioration
Pollution	Agricultural & forestry effluents - nutrient loads (lakes and rivers)	Happening now	Some of area/ population (10-49%)	Slow but significant deterioration
Natural system modifications	Weed encroachment on nesting sites (rivers)	Happening now	Some of area/ population (10-49%)	Slow but significant deterioration
Climate change and severe weather	Floods	Likely in short term (within 4 years)	Some of area/ population (10-49%)	Moderate to rapid deterioration

References:

- Bell, M. 2005. Breeding success of black-fronted tern on the Wairau River. Unpublished report. Department of Conservation, Renwick.
- O'Donnell, C.F.J., Sedgeley, J.A., Westbrooke, I. 2006. Habitat use by black-fronted terns (*Sterna albobriata*) on the Wairau River, New Zealand; preliminary results
- O'Donnell, C.F.J., Hoare, J.M. 2011. Meta-analysis of status and trends in breeding populations of black-fronted terns (*Chlidonias albobriatus*) 1962-2008. *New Zealand Journal of Ecology* 35: 32-43
- Robertson, C.J.R., Hyvönen, P., Fraser, M.J., Pickard, C.R. 2007. *Atlas of bird distribution in New Zealand 1999-2004*. Ornithological Society of New Zealand, Inc. Wellington.
- Steffens, K. 2012. Helicopter surveys of black-fronted terns in Marlborough, New Zealand. Internal report DOCDM-892932. Department of Conservation, Nelson Lakes.



Forest & Bird
GIVING NATURE A VOICE

www.forestandbird.org.nz/important-bird-areas

Photo: Frederic Pelsy
Front: Rachel McClellan, Craig McKenzie