

# LINZ Biosecurity & Biodiversity Programme

Managing biosecurity on the lakes, rivers and land LINZ is responsible for administering

Megan Reid – GM Biosecurity & Biodiversity, LINZ

Shaun Thomason – Advisor Biosecurity & Biodiversity, LINZ

Pete Caldwell – Biosecurity Consultant, Boffa Miskell Limited

An aerial photograph of a wide, braided river system flowing through a valley. The river has multiple channels and is surrounded by sandy and gravelly banks. In the background, there are rolling hills and a large, prominent mountain range under a clear sky. The foreground shows a dense forest of evergreen trees.

## Changes in Biosecurity & Biodiversity

- More funding
- New group
- Connect with wider environmental cross-agency funding





# LINZ Biosecurity & Biodiversity



Credit: Name

# LINZ Biosecurity & Biodiversity

- Our programme
- Our focus
- Key success factors

# Our work programme

Four core components across the work programme:



Strategic projects



Data and information



Aquatic



Terrestrial





# Strategic Projects

Four year programme

Year 1 includes:

- Pastoral Leases biosecurity
- Ngāi Tahu and Te Arawa Lakes Trust
- Lake Pukaki restoration projects







# Data and Information

- Capturing baseline data and mapping
- Field data capture tools
- LINZ Estate Map viewer
- Regional Pest Management Plan Matrix
- Wilding Conifer Information System/ Wallabies
- Identifying new threats/ surveillance and monitoring

The screenshot displays the 'Rakaia' page on the Land Information New Zealand website. The page has a green header with the 'Land Information New Zealand' logo and the name 'Rakaia'. Below the header, there are two tabs: 'Aquatic Plants' (selected) and 'Aquatic Animals'. Under the 'Aquatic Plants' tab, there are two sections:

- Egeria**  
**Eradication Programme**  
Environment Canterbury  
Submerged perennial. Leaves usually in whorls of 4-5 (sometimes 3-8). Leaves 10-30mm long, narrowing to an acute tip. Egeria is the only oxygen weed with visible white flowers.
- Marshwort**  
**Eradication Programme**  
Environment Canterbury  
Robust bottom-rooted perennial, which has long, branched running stems that sit just below the water surface and extend for several metres across. Bright green heart shaped leaves with pinkish undersides <10cm, smaller than other water lilies. Distinctive bright yellow 5 petalled fringed flowers.

To the right of the text is a large satellite map of the Rakaia area, showing a river and surrounding land. The map includes a zoom in (+) and zoom out (-) button, a home button, and a compass. The map is overlaid with a blue line representing the river and a yellow line representing the land. The text 'Environment Canterbury' and 'Land Information New Zealand' are visible on the map.



# Aquatic Programme

- Lake Karapiro
- Te Arawa Lakes
- Waitaki Lakes
- Lake Wānaka
- Lake Dunstan
- Lake Wakatipu/ Kawarau River



Photo Credit : Michal Klajban / CC BY-SA





- Rangitikei River
- Waiau Toa/Clarence River
- Rakaia River
- Rangitata River
- Rees and Dart/Te Awa Whakatipu Rivers





# LINZ Terrestrial Weed Programme

Credit: Name





# Terrestrial Biosecurity Programme Overview

- Protecting our **indigenous species** and **landscapes** through the **control of invasive species**
- Over 100 control sites targeting **iconic landscapes** and **threatened species**
- **Range of techniques** used dependent on pest species, density and terrain

# BML Delivery Role on behalf of LINZ

## Management of the Biosecurity Control Programme

- Annual control works programme
- Consultation with stakeholders
- Engaging, managing and auditing contractors
- Site inspections
- Annual Reporting





# Stakeholders

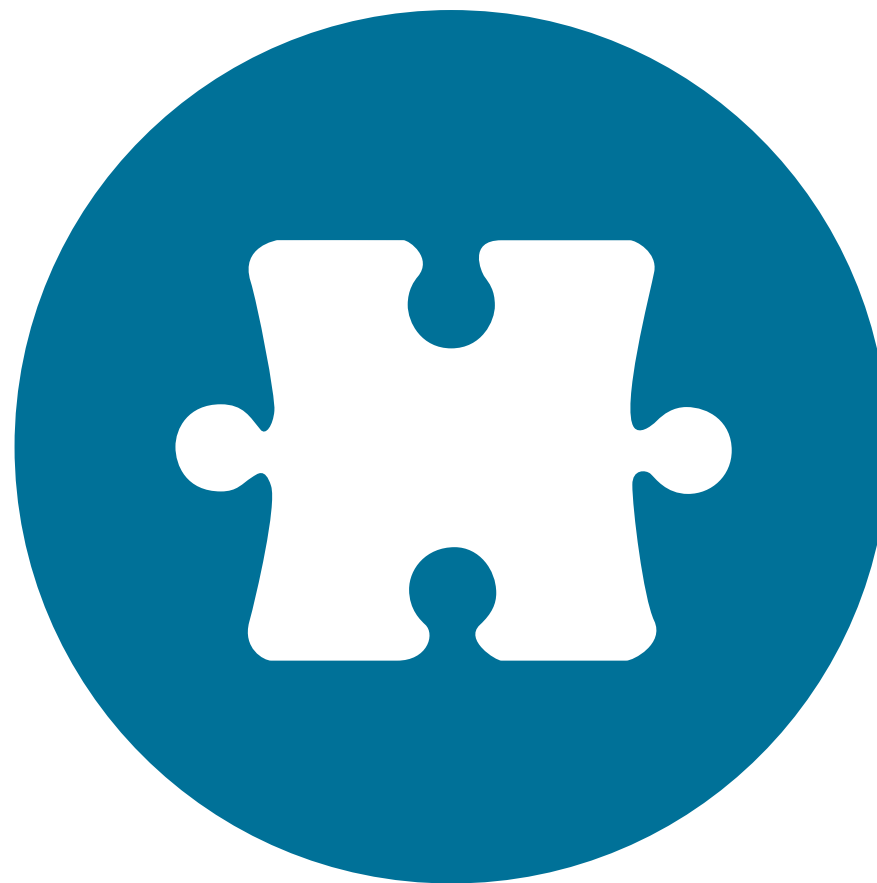
- Department of Conservation
- Regional Councils
- Iwi
- Landholders
- Landcare groups
- Te Manahuna Aoraki
- BRaid



TE MANAHUNA  
AORAKI PROJECT

# Challenges

- High boundary-to-area ratio
- Dispersal across boundaries
  - Wind-dispersed species
  - Bird-dispersed species
  - Wallabies and rabbits
- Seed viability
- Numerous, widespread sites

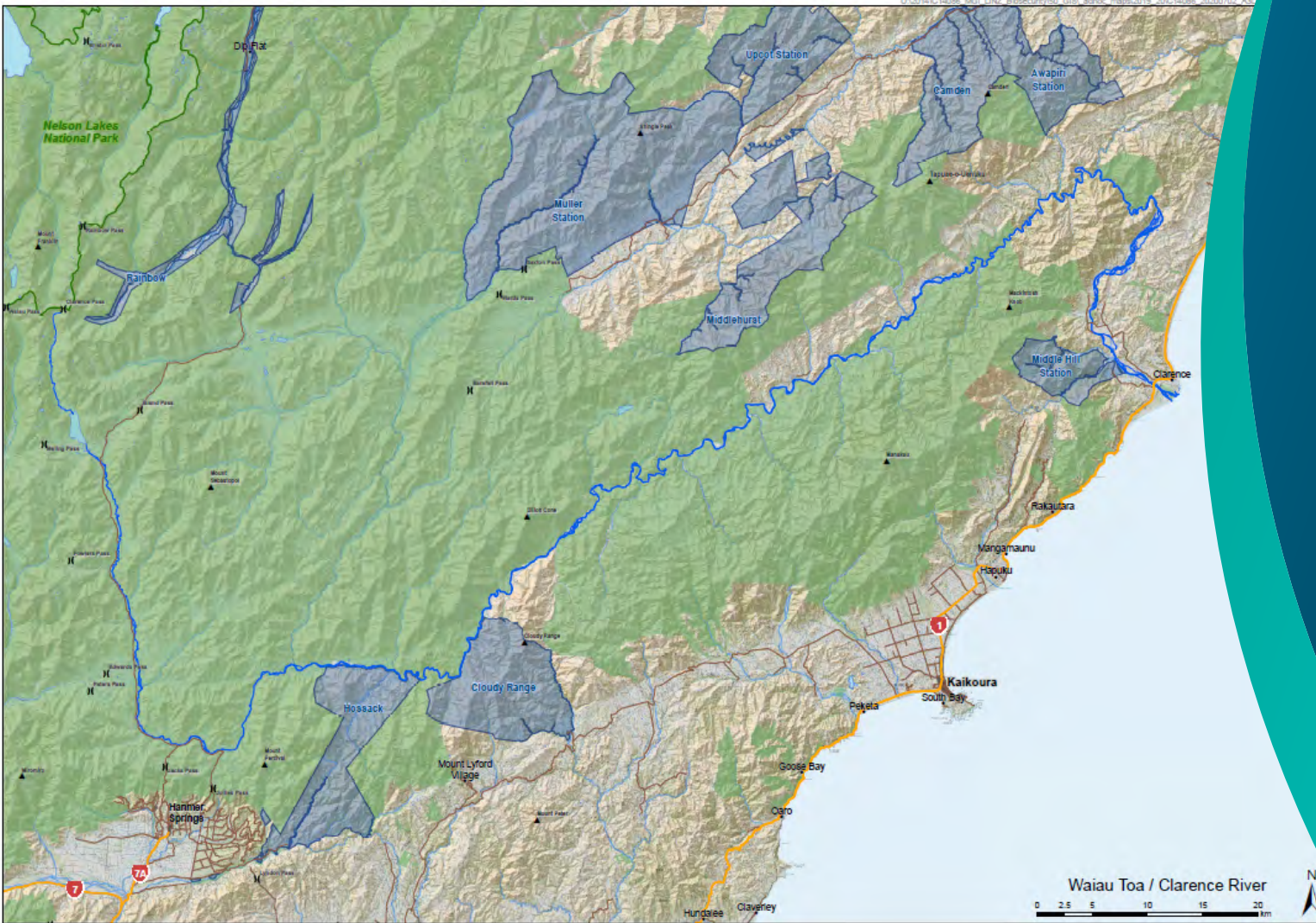






# Waiau Toa/ Clarence River





- Extensive catchment
- Various land tenures
- Numerous pest species
- Endemic species



























A landscape photograph showing a wide riverbed in the foreground, covered with dense vegetation including large patches of purple lupines and some red flowers. The middle ground features a grassy field with scattered shrubs and a line of trees on a distant hill under a cloudy sky.

# Tekapo River

- LINZ, DOC, ECan
  - Project River Recovery
- Wide riverbed
  - Russell lupins
  - Broom and Gorse
  - Wilding Conifers
  - Rabbits
  - Wallabies





# What success will look like

We will know if we are successful if we are able to:

- Increase our funding leading to more jobs in regions;
- Improve our data and information to inform ongoing pest and weed management controls for LINZ
- Reduce weeds and pests across the LINZ administered lakes, rivers and land, including the eradication of lagarosiphon in Lake Wanaka
- Enhance collaboration across agencies, with local government, iwi and communities; and
- Deliver strategic projects that look to pilot, test or try a new model of delivery at specific sites