



# REIMAGINING THE MATAURA RIVER



REIMAGINING  
MATAURA



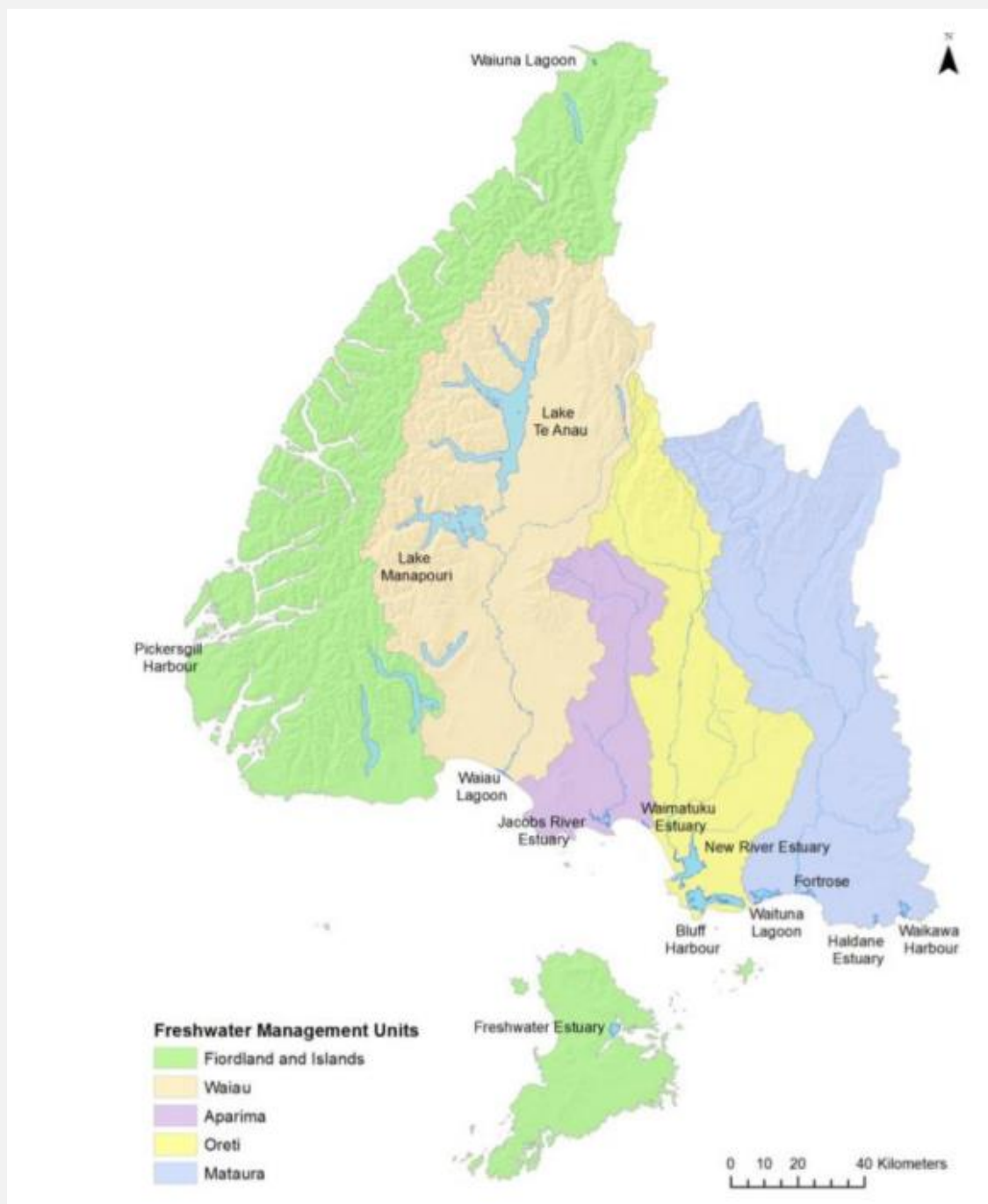
TAIAO  
HOKONUI RŪNANGA



## BACKGROUND

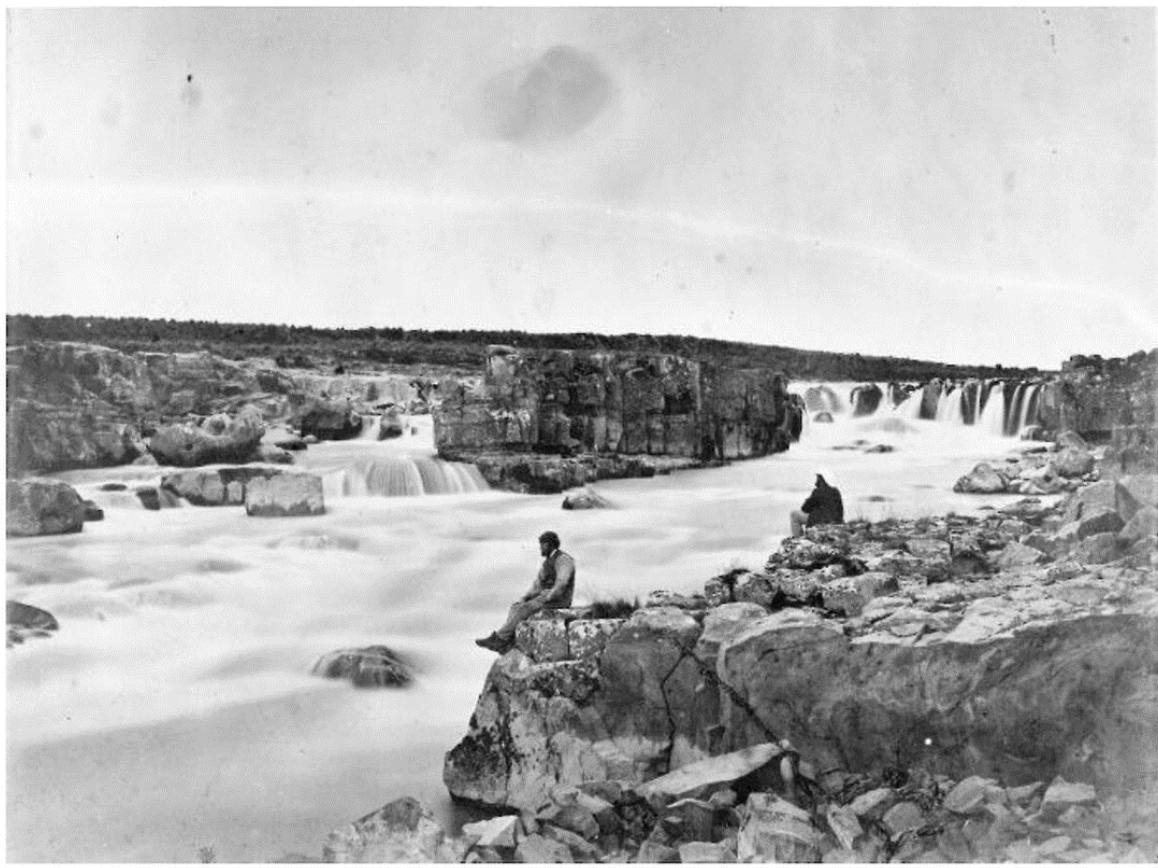
- Located in the Murihiku region and is approximately 240km long. The river's headwaters are in the Eyre Mountains to the south of Lake Whakatipu.
- It flows southeast towards Gore, where it turns south. It passes through Mataura and enters the Pacific Ocean at Toetoes Bay on the southern coast. Much of its channel is braided.
- Prone to flooding and ad hoc responses by local Government, there is a need to reconsider the current flood investment and floodplain management to move towards a climate-resilient platform in support of enhanced cultural, economic, biodiversity, and community outcomes.







# HISTORY



# REIMAGINING MATAURA PROJECT STEERING GROUP

## *Murihiku Rūnaka Representatives:*

- Gail Thompson - Awarua
- Terry Nicholas - Hokonui
- Evelyn Cook – Waihōpai
- Muriel Johnstone – Ōraka/Aparima

## *Te Rūnanga o Ngāi Tahu Representative*

- Sue Corby

## *Funding Partners*



Cain Duncan

Michael Green



*Director – Megan Reid*

*Programme Coordinator – Louise Dennison*

# REIMAGINING MATAURA PROJECT PURPOSE

To reimagine the Matura River System by bringing together the catchment using design methodologies and Mātauranga Māori in order to build cultural, environmental, and economic resilience in the catchment.

## WHAT WE WANT TO ACHIEVE

- We have an eye for the future and ensuring the Mataura River is a special place, culturally, environmentally, and economically.
- We are gathering information regarding what is planned along the catchment, what is underway, and where there are gaps.
- We want to inspire our people, communities, stakeholders, and agencies to contribute meaningfully to the vision.

# PROGRAMME OUTLINE



[illegible]

# SITE-SPECIFIC PROJECTS

Testing and trialling river system improvement works



An aerial photograph of a vast, rolling green landscape. In the foreground, a winding river or stream flows through the fields, bordered by a line of tall, thin trees. The middle ground shows a patchwork of green fields and hedgerows. In the background, rolling hills and mountains are visible under a clear sky. A semi-transparent white box with a dark border is centered over the image, containing the title text.

# BALFOUR PROJECT – GLENGORDON WETLAND





# CATTLE FLAT PROJECT



## **Phase 1 Deliverables:**

Gain site access and conduct a full site visit.

Removal of vegetation from gravel beds.



## **Phase 2 Deliverables:**

Ongoing hydrological monitoring above and below the vegetation removal site.

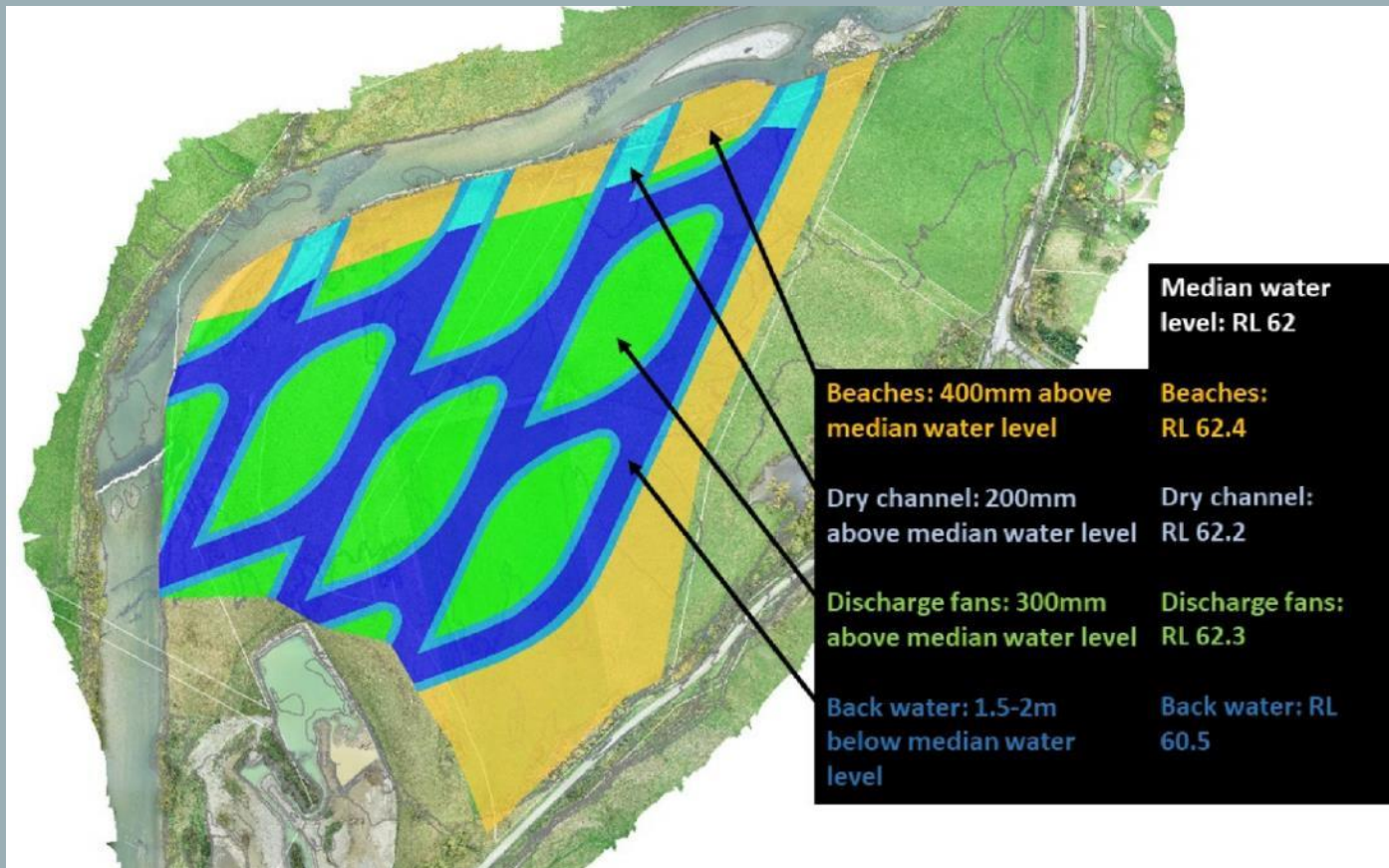


## **Phase 3 Deliverables:**

Ongoing restoration of farmland to wetland, working in collaboration with the landowner.



# GORE PROJECT



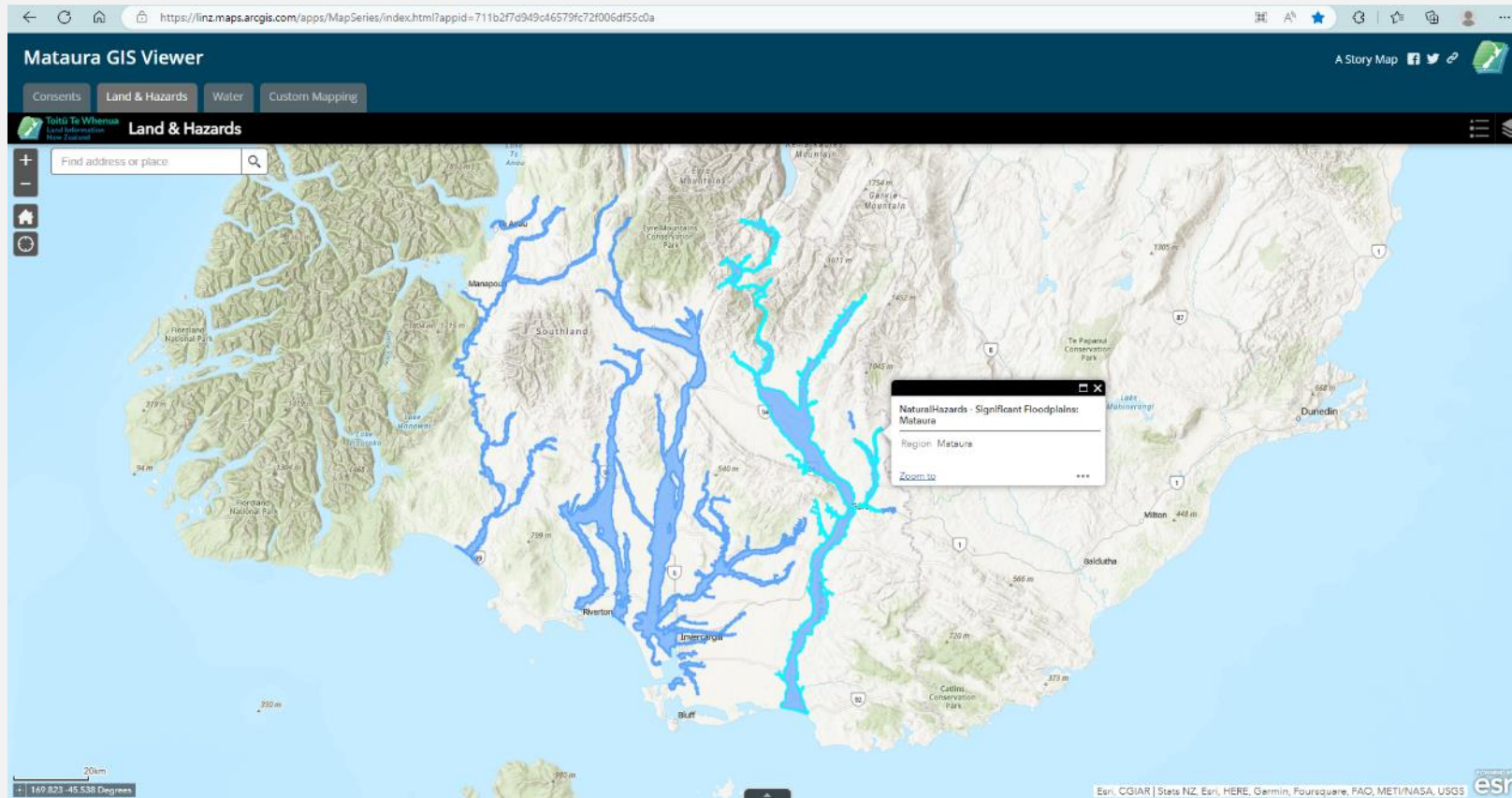
# DATA AND INFORMATION



# WEBSITE

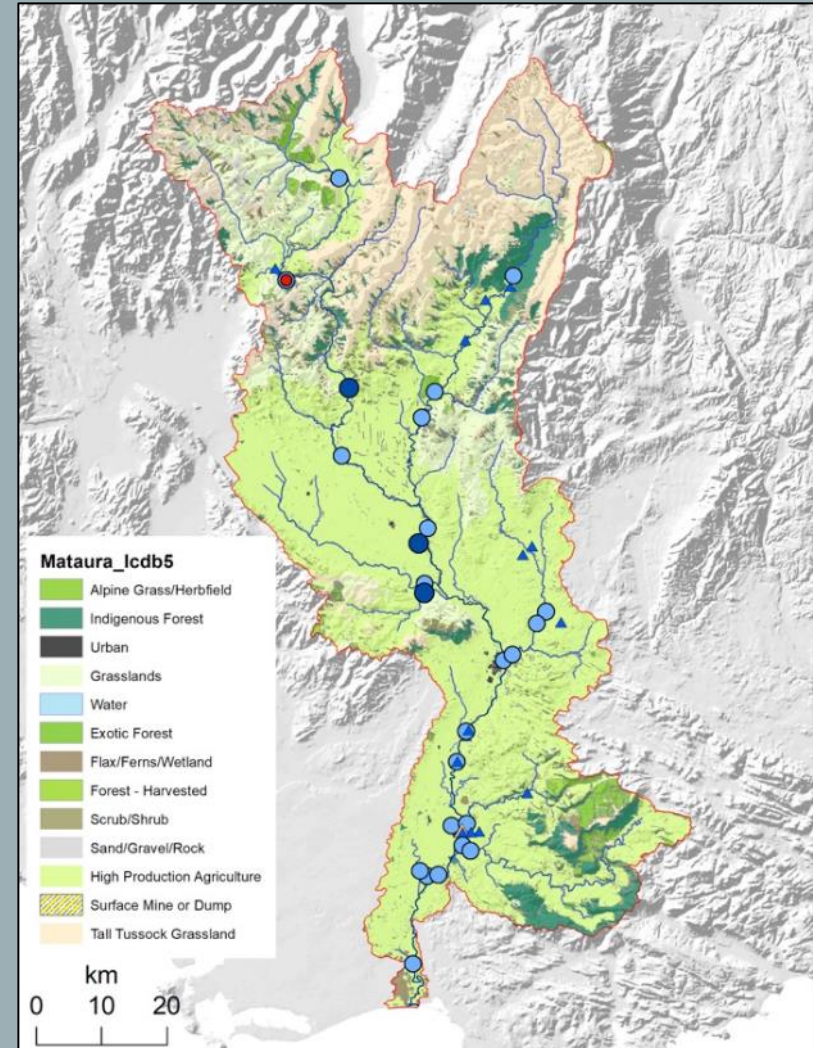
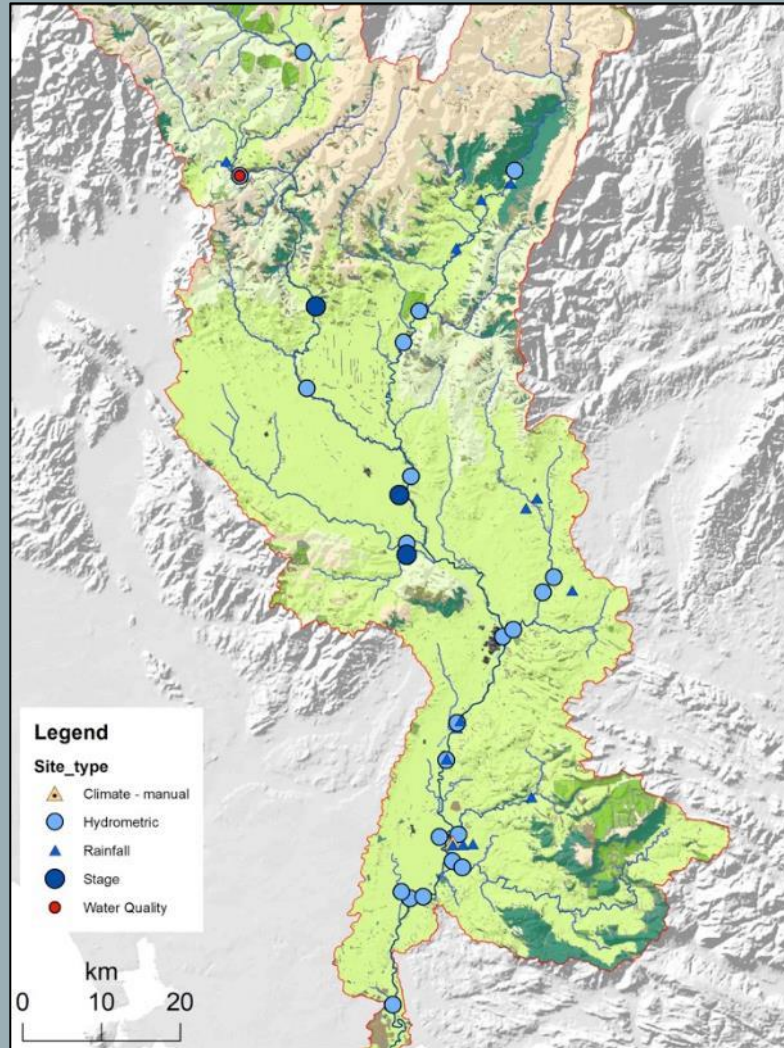


# WEBVIEWER - LINZ





# HYDROLOGICAL DATA





# WETLAND ESTABLISHMENT

## WETLAND RESEARCH AND ESTABLISHMENT

- Background research around existing wetland creation across Murihiku.
- Production of a system-wide stocktake of current wetland establishment.
- Development of wetland creation case studies – including opportunities, challenges, and lessons learned.
- Development of a wetland framework that will support the decision-making process of wetland establishment.
- Creation of a priority site list for wetland establishment in the Maitara River catchment.



## WETLAND DATA CONFIGURATION

- Mapping of wetland data configuration needs – what is needed to support wetland establishment and the associated investment.
- Development of a high-level ‘Wetland Establishment Data Strategy’ that supports the project goals and objectives based on the mapped data needs.
- Production of a Phase Two project scope to implement the ‘Wetland Establishment Data Strategy’.





FUTURE DIRECTION

A scenic landscape featuring a river flowing through a valley with mountains in the background under a bright sun. The sun is high in the sky, creating a starburst effect. The river is in the foreground, with water splashing and reflecting the sunlight. The mountains are in the background, with some snow on their peaks. The overall scene is bright and clear.

# GOVERNANCE

- Management of the Mataura River catchment as a whole system
- Utilising an adaptive governance structure
- Iwi-led, with local and central government, as well as other relevant stakeholders

## LONG TERM VISION

- Find ways to enhance cultural, economic, biodiversity, and community outcomes within the project
- Reimagine the management of the Mataura River at a whole system scale
- Improve the hauora of the Mataura River for future generations



# DISCUSSION DOCUMENT AND BUDGET BID

- Drafting of a discussion document to determine how we scale projects and consider the catchment as a whole system
- The discussion document will provide options/recommendations for the next phase of the project



HOKONUI RŪNANGA KAUPAPA TAIAO  
FRESHWATER MONITORING  
PROGRAMME



# HOKONUI RŪNANGA KAUPAPA TAIAO

## Biosecurity & Biodiversity

## Environmental & Cultural Planning

### Wai-māori Programme

### Operations – Pest/Vegetation Control, Predator Free, Biodiversity Monitoring

#### Monitoring Programmes

Kakahi Monitoring  
Tuna Monitoring  
Gollum Galaxiid Monitoring  
Cultural Monitoring  
Kanakana Monitoring

#### General Programmes

Seed Collecting  
Electrofishing  
SHMAK Kit Testing  
eDNA Testing  
Pheromone Sampling

#### Education & Training – L&D, Cadet Programme, Career Pathways







# Tuna surveys





# FUTURE ASPIRATIONS/GOALS

## Waikana Stream project

- Long-term restoration of a culturally significant tributary into the Maitara River
- Collaboration between Reimagining Maitara, Kaupapa Taiao, Te Tapu o Tane, and the local community





An aerial photograph of a coastal landscape. A river or estuary flows from the top left towards the bottom right, curving around a green field. The river is bordered by a line of small buildings or structures. In the foreground, there is a sandy beach with waves breaking onto it. The background shows rolling hills and a cloudy sky.

# SUMMARY



# CONTACT

## Website

[www.reimaginingmataura.org.nz](http://www.reimaginingmataura.org.nz)

## Email

[megan@hokonuirunanga.org.nz](mailto:megan@hokonuirunanga.org.nz)

[riki.parata@hokonuirunanga.org.nz](mailto:riki.parata@hokonuirunanga.org.nz)

[Louise.dennison@hokonuirunanga.org.nz](mailto:Louise.dennison@hokonuirunanga.org.nz)

