

2 Important Areas for New Zealand Seabirds

Sites on Land

Rivers, estuaries, coastal
lagoons & harbours



Forest & Bird
GIVING NATURE A VOICE



IMPORTANT AREAS FOR NEW ZEALAND SEABIRDS



This document has been prepared for Forest & Bird by Chris Gaskin, IBA Project Coordinator (NZ).

The Royal Forest & Bird Protection Society of New Zealand
Level One, 90 Ghuznee Street
PO Box 631
Wellington 6140
NEW ZEALAND

This report is available from the Forest & Bird website in pdf form.

© Copyright February 2016, Forest & Bird

Contributors

The following individuals have contributed to the profiles in this document in a variety of ways, including supply of data and information about seabirds, and reviewing draft material, site profiles, species lists and site maps.

Nick Allen, Tim Barnard, Tony Beauchamp, Mike Bell, Mark Bellingham, Robin Blyth, Phil Bradfield, John Cheyne, Wynston Cooper, Andrew Crossland, Philippa Crisp, Paul Cuming, John Dowding, Hannah Edmonds, Lloyd Esler, Julian Fitter, Peter Frost, Mel Galbraith, Liz Garson, Peter Gaze, Andrew Grant, Tony Habraken, Kate Hand, Ken Hughey, Elaine Lagnaz, Chris Lalas, Peter Langlands, David Lawrie, Eila Lawson, Nick Ledgard, Nikki McArthur, Rachel McClellan, Craig McKenzie, Bruce McKinlay, Michael McSweeney, David Melville, Gary Melville, Mark O'Brien, Colin O'Donnell, Gwenda Pulham, Aalbert Rebergen, Phil Rhodes, Adrien Riegen, Neil Robertson, Paul Sagar, Frances Schmechel, Rob Schuckard, Ian Southey, Kate Steffens, Graeme Taylor, Gillian Vaughan, Jan Walker, Susan Waugh, David Wilson, Kerry-Jayne Wilson, Steve Wood, Keith Woodley.

Cover design: Danielle McBride, Paradigm Associates, Auckland

Front cover: Rachel McLellan (Black-billed Gulls), Craig McKenzie (Black-fronted Tern)

Back cover: Frederic Pelsy (Ahuriri River)

Recommended citation: Forest & Bird (2016). *New Zealand Seabirds: Sites on Land, Rivers, estuaries, coastal lagoons & harbours*. The Royal Forest & Bird Protection Society of New Zealand, Wellington, New Zealand.

NZo67	Waitaki River	Canterbury Otago
-------	---------------	------------------

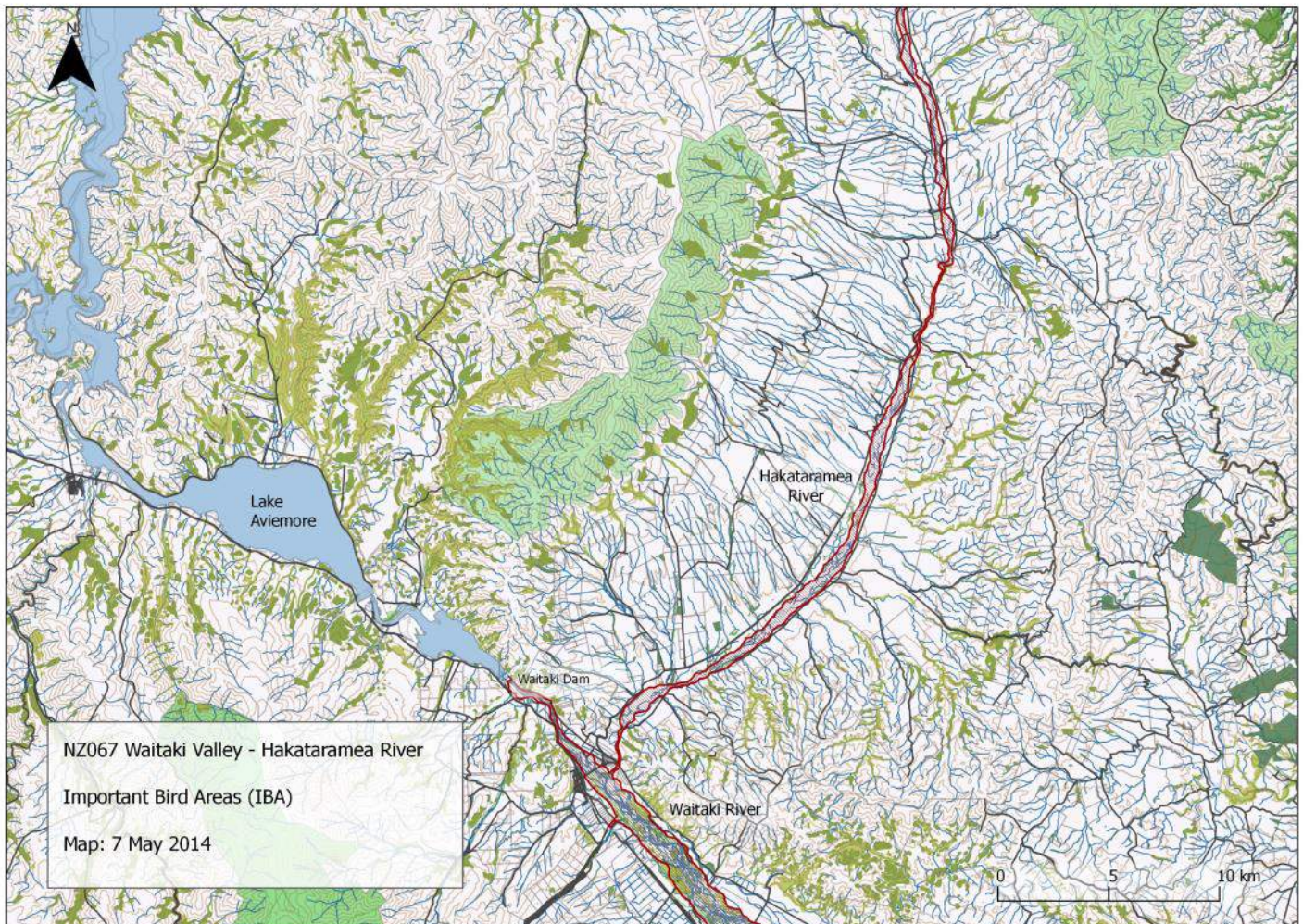
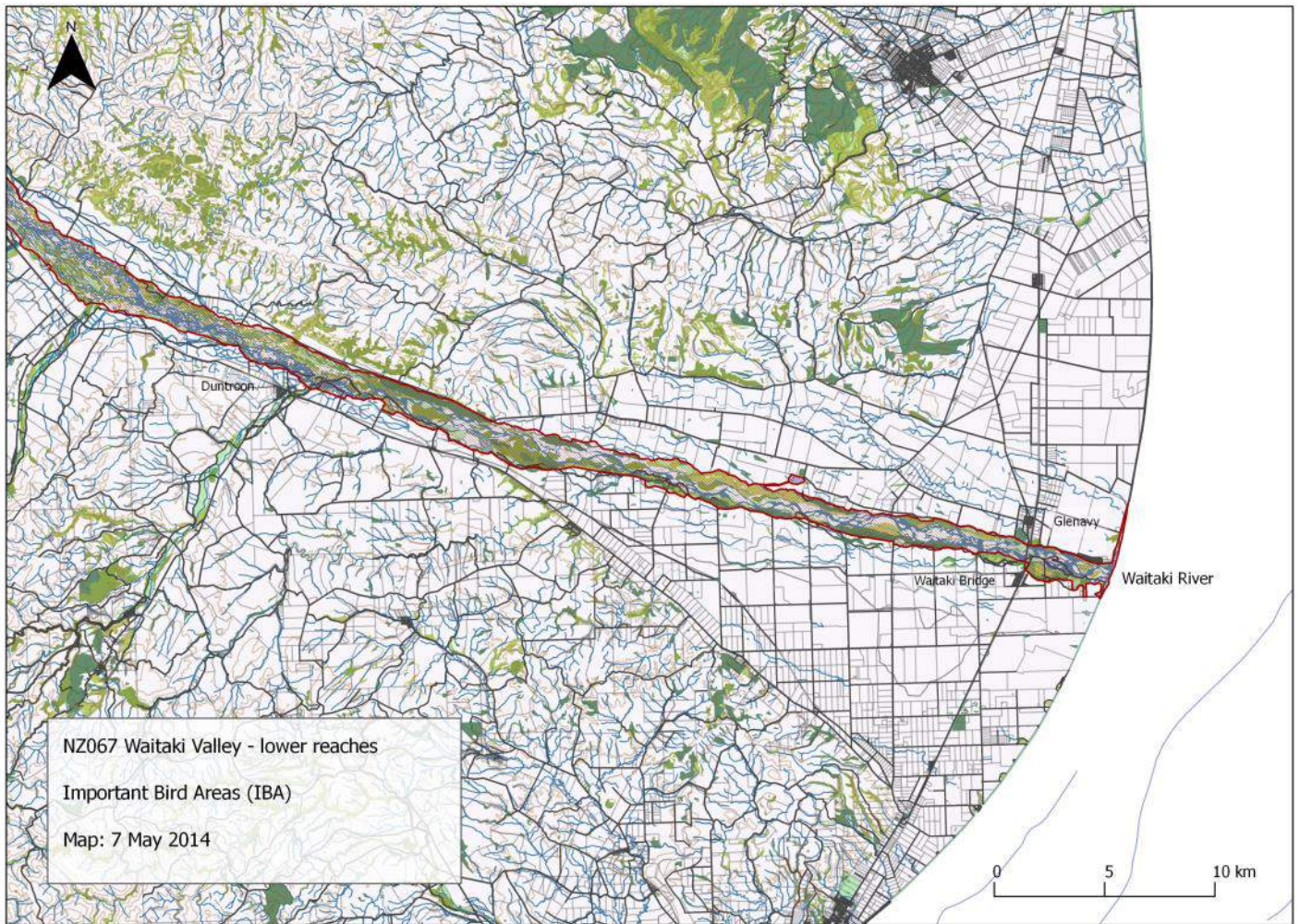
Location	New Zealand, Canterbury - Otago
Central coordinates	44.928155°S, 171.100456°E
IBA criteria	A1
Area	9,509 ha
Altitude	0 - 500m (Hakataramea)
Year of Assessment	2013

Populations of IBA trigger species:

Species	Season	Period	Population estimate (pairs)	IBA criteria	IUCN cat.	NZ Threat Class.
Black-billed Gull	Breeding	1970-2014	508-952	A1, A4i	EN	Nationally Critical
Black-fronted Tern	Breeding	1962-2011	111-231	A1, A4i	EN	Nationally Vulnerable

Ornithological information: Besides the trigger species the following species are confirmed or likely to be breeding: Black Shag, Little Shag, White-faced Heron, Canada Goose, Paradise Shelduck, Mallard, Grey Duck, Australasian Harrier, South Island Pied Oystercatcher, Variable Oystercatcher, Pied Stilt, Banded Dotterel, Spur-winged Plover, Southern Black-backed Gull, White-fronted Tern, Rock Pigeon, NZ Kingfisher, Welcome Swallow, NZ Pipit, Grey Warbler, Silvereye, Skylark, Blackbird, Song Thrush, Yellowhammer, Chaffinch, Greenfinch, Goldfinch, Redpoll, House Sparrow, Starling, Australian Magpie. Other species recorded: Spotted Shag, Stewart Island Shag, Great Egret (White Heron), Australasian Shoveler, Eastern Bar-tailed Godwit, Red-billed Gull,, Sulphur-crested Cockatoo, Cirl Bunting.

Protected area	Designation	Relationship with IBA
Waitaki River	Conservation Area	Protected area contained within site
Kaik	Fishing Reserve	Protected area contained within site
Waitaki Bridge	Marginal Strip	Protected area contained within site
Waitaki Bridge	Conservation Area	Protected area contained within site
Waitaki Riverbed	Conservation Area	Protected area contained within site
Waitaki River	Marginal Strip	Protected area contained within site
Black Point	Government Purpose (Wildlife Management)	Protected area contained within site
Hakataramea River	Conservation Area	Protected area contained within site



IUCN Habitat	Habitat detail	Extent (% of site)
Marine Intertidal	Shingle Shoreline	Minor
Marine Coastal/Supratidal	Rivermouth (Estuary and Spit)	Major
Wetlands (inland)	Permanent Rivers; Extensive River Gravel Beds (Braided River); Small Swamps	Major
Introduced Vegetation	Broom, gorse, pasture grasses & rank weeds, willow margins	Major
Grasslands	Tussock on river flats (upper reaches Hakataramea)	Major
Shrubland	Kanuka, matagouri (<i>Discaria toumatou</i>), bracken	Major

Threats to the site (pressure) - IUCN Classifications

Threat Level	Notes	Timing	Scope	Severity
Invasive & other problematic species, genes & diseases	Invasive alien species - mustelids, cats, rats, hedgehogs	Happening now	Some of area/ population (10-49%)	Moderate to rapid deterioration
Human intrusions and disturbance	Recreational activities by lake and beach users - includes dogs.	Happening now	Some of area/ population (10-49%)	Slow but significant deterioration
Biological resource use	Hunting - intentional use (waterfowl - seasonal); Persecution	Happening now	Some of area/ population (10-49%)	Slow but significant deterioration
Natural system modifications	Water management/use - abstraction of surface & ground water (agricultural use)	Happening now	Some of area/ population (10-49%)	Slow but significant deterioration
Pollution	Agricultural & forestry effluents - nutrient loads	Happening now	Some of area/ population (10-49%)	Slow but significant deterioration
Natural system modifications	Weed encroachment on nesting sites (rivers)	Happening now	Some of area/ population (10-49%)	Slow but significant deterioration
Climate change and severe weather	Floods	Likely in short term (within 4 years)	Some of area/ population (10-49%)	Moderate to rapid deterioration

References:

Boffa Miskell 2006. North Bank Tunnel Concept water consents. Terrestrial ecology assessment. Report prepared for Meridian Energy. Christchurch, Boffa Miskell.

DOC River Survey Database 2013.

DOC 2013. CWMS: Lower Waitaki – South Coastal Canterbury Zone: Compilation of “Summary of intrinsic values” chapters from Canterbury Conservancy’s intrinsic values catchment reports. Waitaki (DOCDM-611864)

McKinlay, B. 1990. Manuhierikia River survey. Unpublished file report BIR 7. Dunedin, Department of Conservation.

O'Donnell, C.F.J., Moore, S.G.M. 1983. The wildlife and conservation of braided river systems in Canterbury. Fauna Survey Unit Report 33. Wellington, New Zealand Wildlife Service, Department of Internal Affairs. 73 p.

O'Donnell, C.F.J., Hoare, J.M. 2011. Meta-analysis of status and trends in breeding populations of black-fronted terns (*Chlidonias albobristatus*) 1962-2008. *New Zealand Journal of Ecology* 35: 32-43

Robertson, C.J.R., Law, E., de Hamel, R.J.B., Wakelin, D.J., Courtney, S.P. 1984. Habitat requirements of wetland birds in the lower Waitaki River catchment, New Zealand. Occasional Publication 6. Wellington, New Zealand Wildlife Service, Department of Internal Affairs. 769 p.

Robertson, C.J.R., Hyvönen, P., Fraser, M.J., Pickard, C.R. 2007. *Atlas of bird distribution in New Zealand 1999-2004*. Ornithological Society of New Zealand, Inc. Wellington.



Forest & Bird
GIVING NATURE A VOICE

www.forestandbird.org.nz/important-bird-areas

Photo: Frederic Pelsy
Front: Rachel McClellan, Craig McKenzie