




Ashley River Update

Nick Ledgard & Grant Davey

www.arrg.org.nz

BRaid seminar June 26, 2019

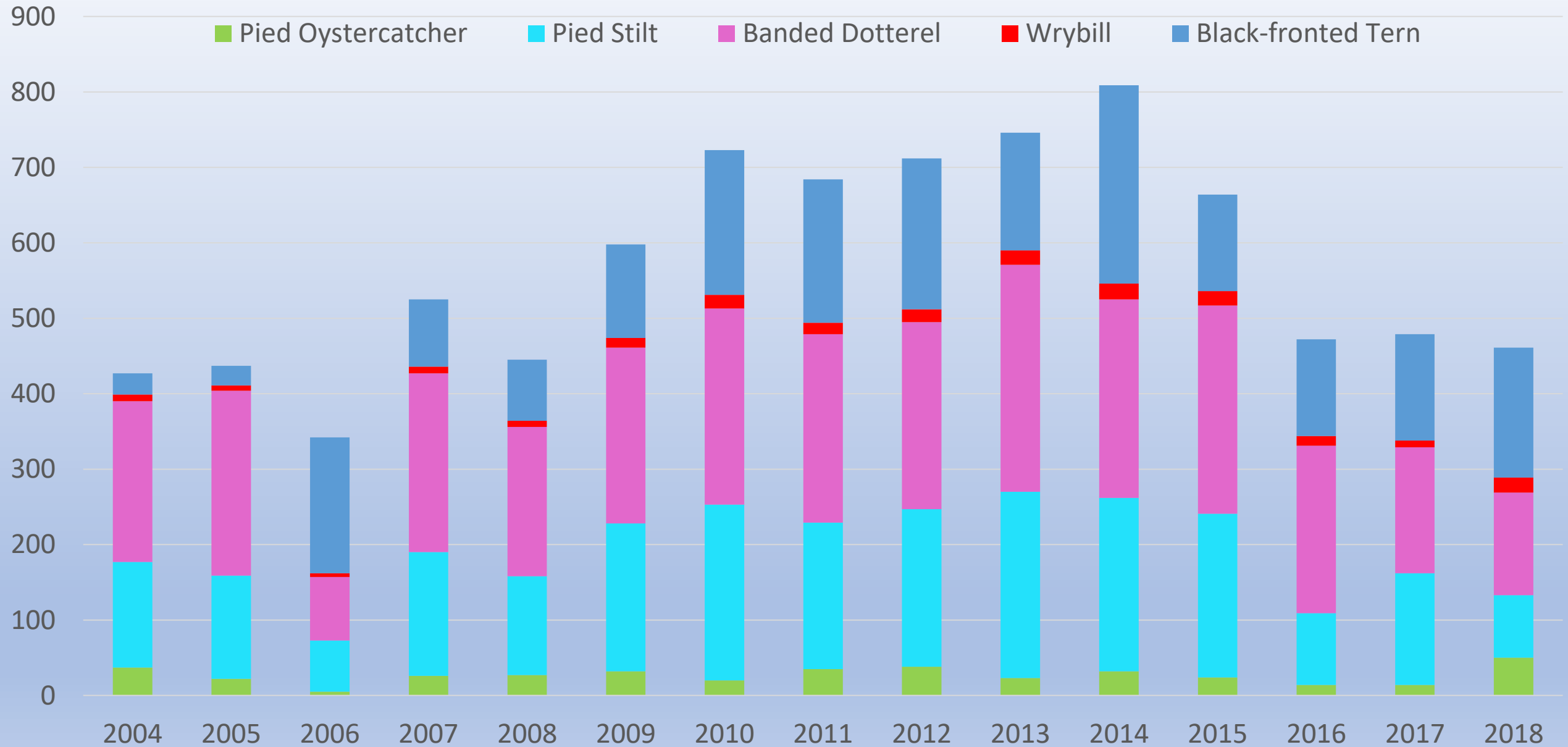
An aerial photograph showing a wide river delta with multiple channels flowing into the ocean. The landscape is a mix of green fields, brownish riverbanks, and a small town on the left. In the distance, a range of mountains with snow-capped peaks is visible under a clear blue sky.

In the Group's annual report for the 2017-2018 season, the main recommendations included:

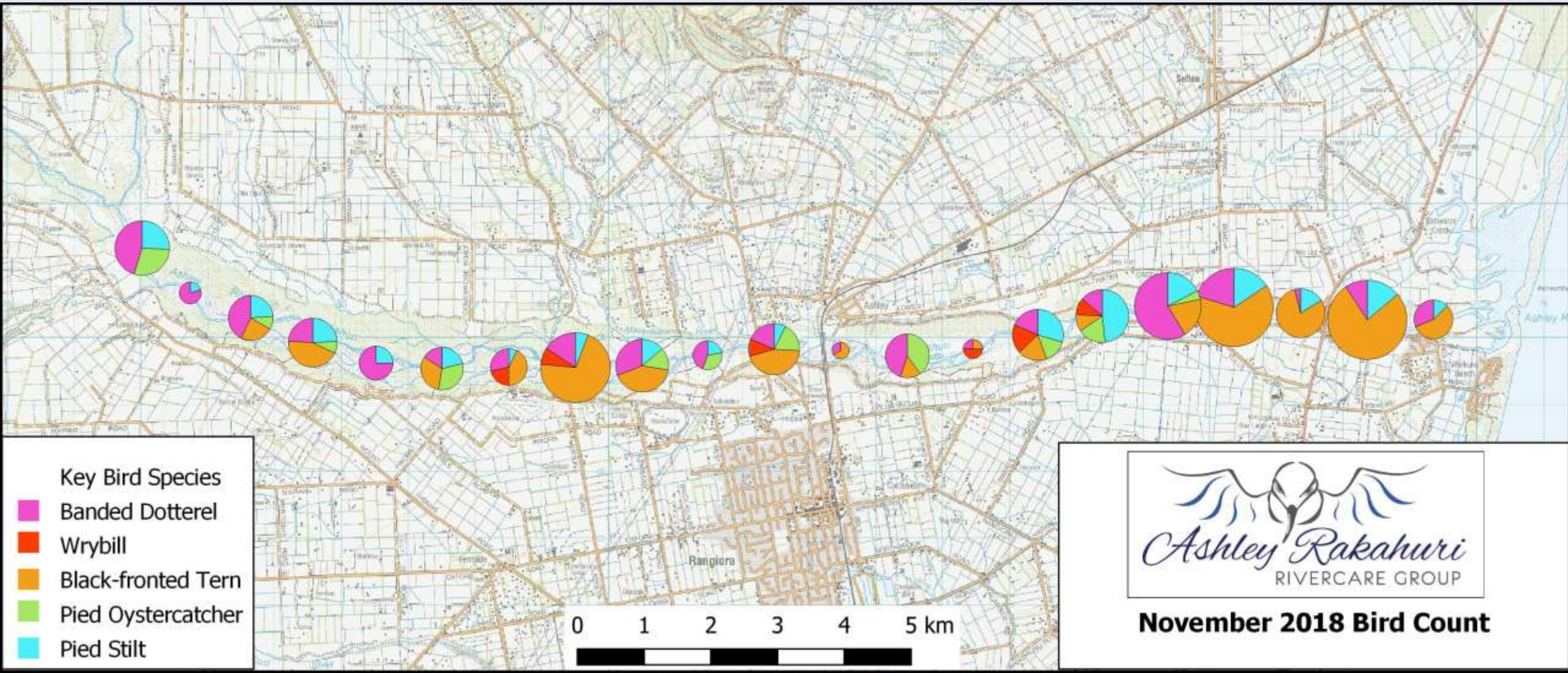
- 1. Surveys. Continue and refine annual bird surveys**
- 2. Monitoring. Improve monitoring activities**
- 3. Habitat. Create / maintain better habitat for feeding / breeding. Weeds**
- 4. Recording. Improve record keeping / mapping – user friendly outputs**
- 5. Predator control. Explore opportunities for more effective trapping – better locations and new technologies**
- 6. Shingle extraction. Maintain operator collaboration / investigate impacts**
- 7. Awareness. Maintain good advocacy with public and agencies / explore new funding opportunities**

Surveys

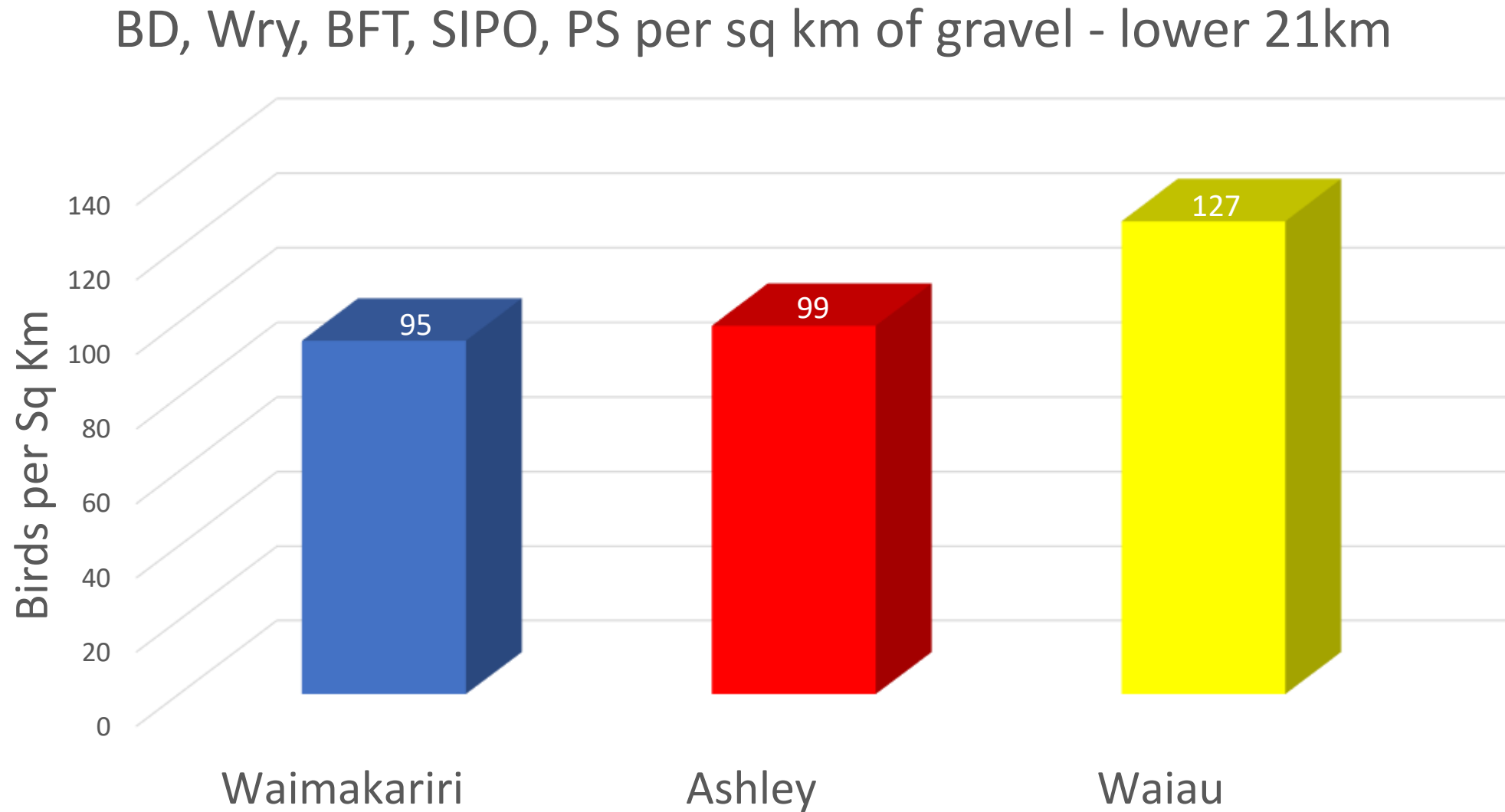
Annual Bird Count Results



Surveys. 2018 annual bird count – numbers by kilometre



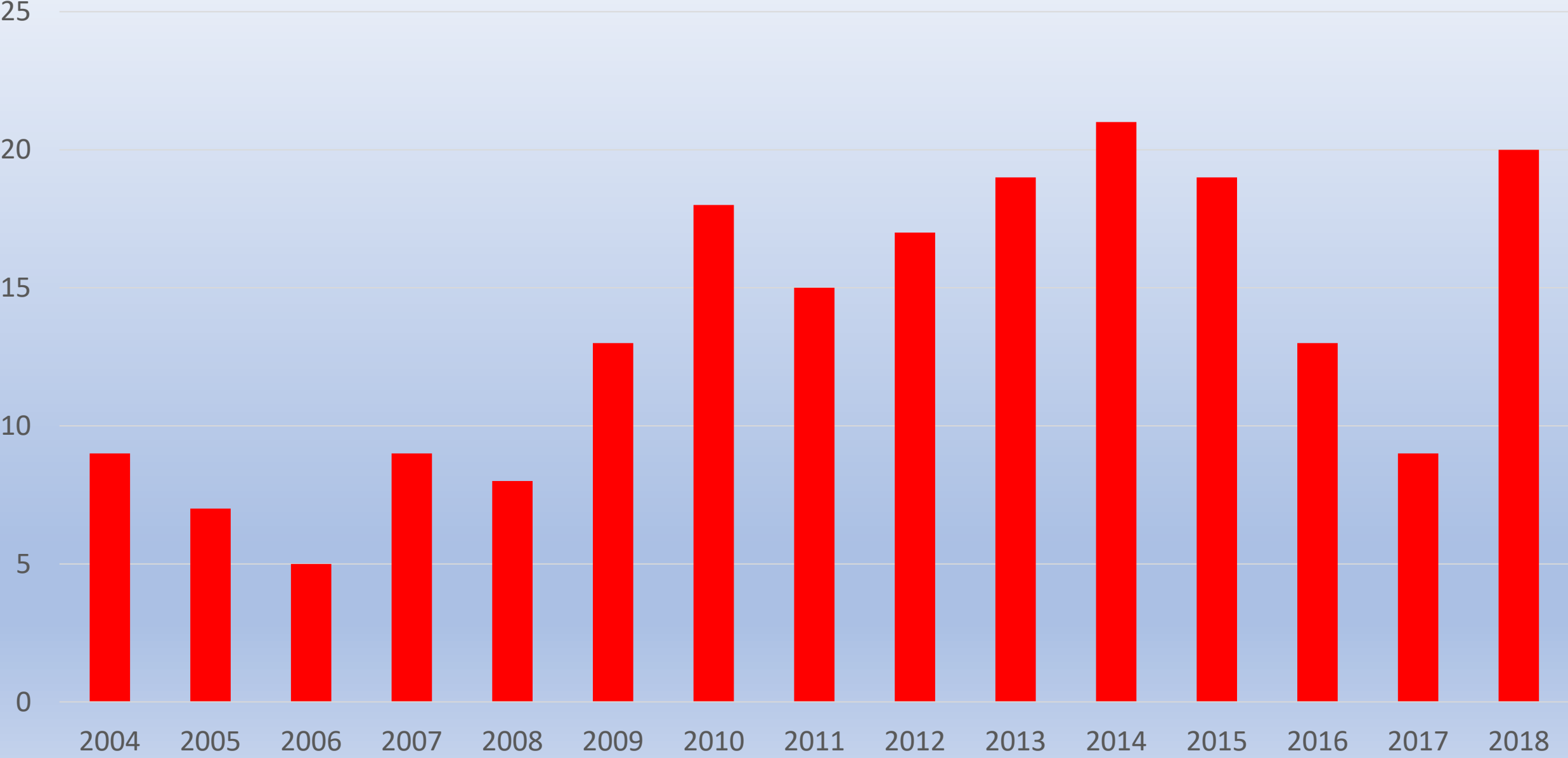
Surveys. Comparative numbers per Km² for three braided rivers (2018 surveys)



Surveys. Nesting birds during 2018 – 2019 season



Surveys – wrybill numbers over time



Monitoring. Case study of 2018 – 2019 black-billed gull colony



15 Nov 2018

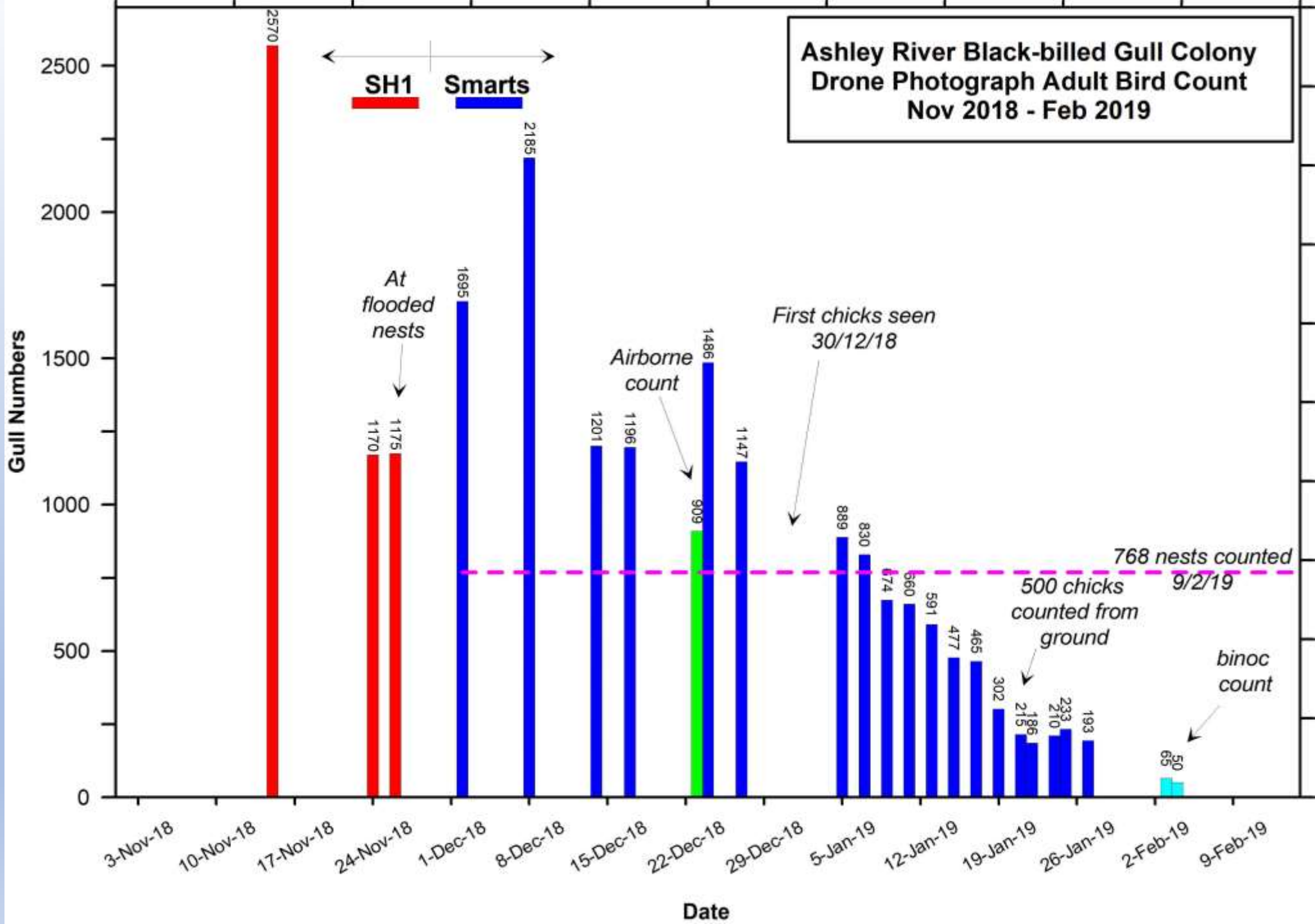
Monitoring - flood impact



Post-flood gull colony relocation site

26 Nov 2018

Monitoring – gull colony numbers over time.



Habitat. Challenge of weed invasion

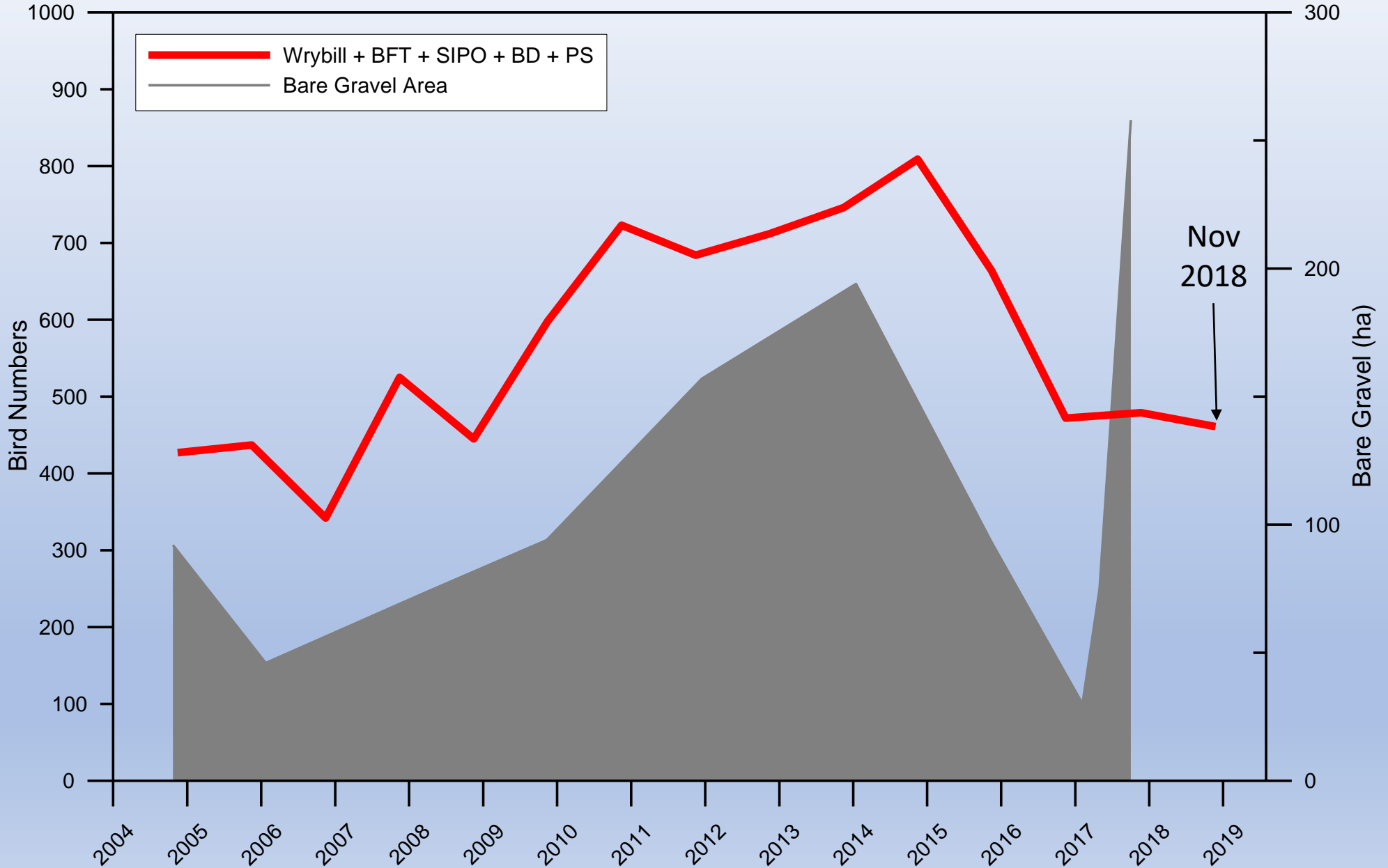
2014

2016



Habitat. Major impact of weed invasion on bird numbers

Key Bird Species & Bare Gravel Area



Habitat. Weed control - cultivation preferred over chemical spraying



Habitat. Weed control – ongoing trials using machines and ripping



Improved recording and mapping

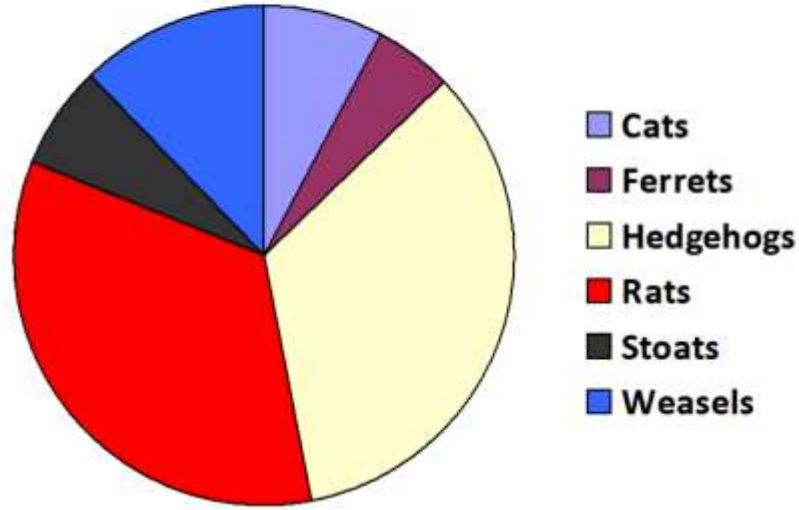
Use of drone to count nesting gulls



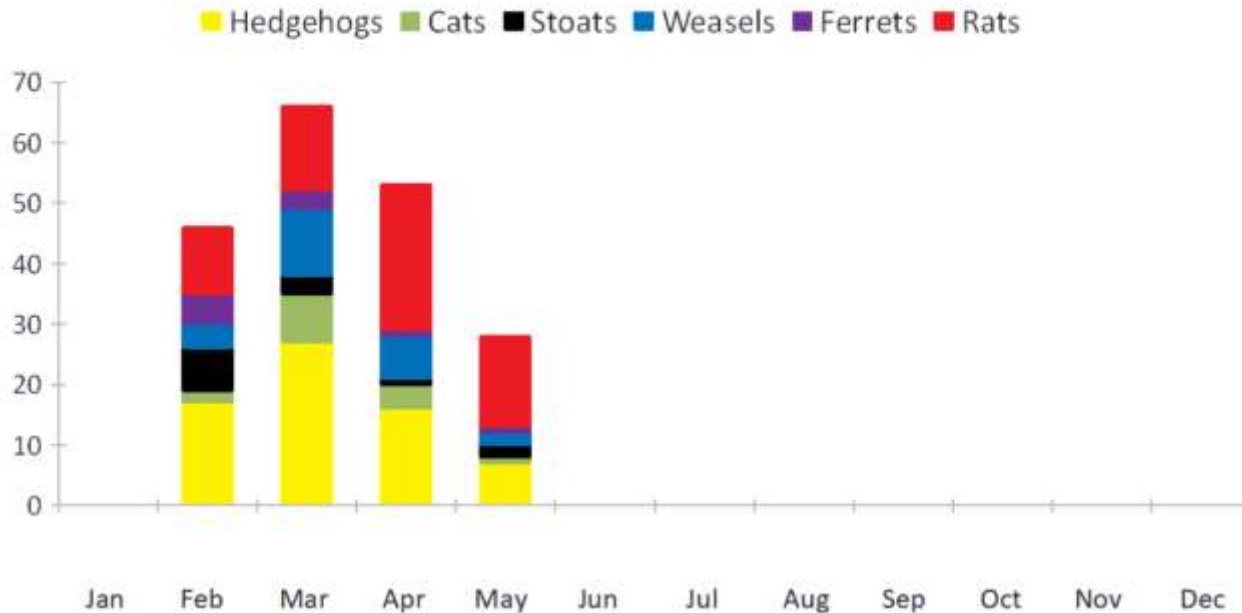
Improved recording and mapping

Predators Trapped

From: 1/02/2019 To: 19/05/2019



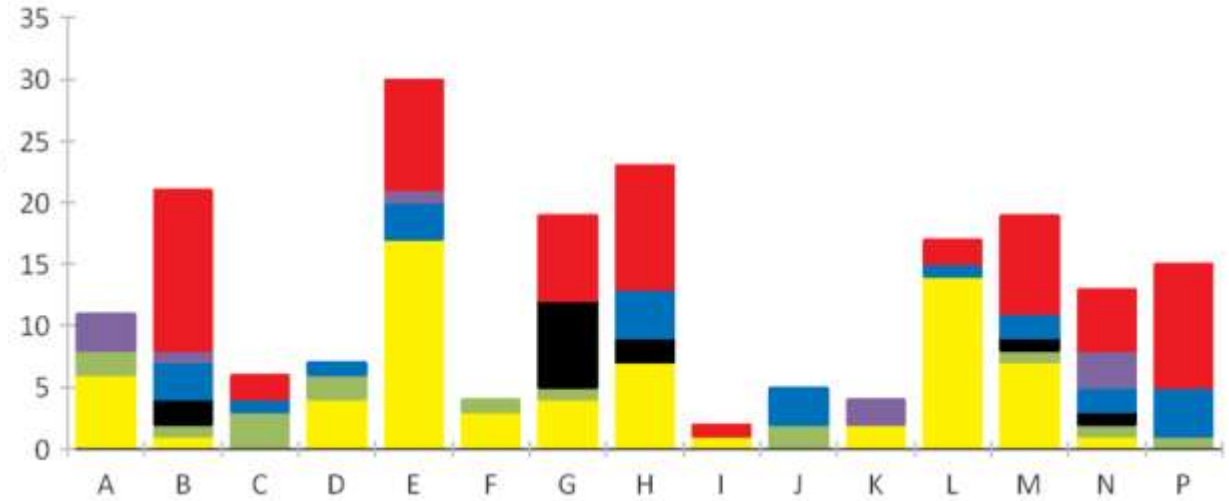
Predators Caught Per Month In: 2019



From: 01-Feb-19 To: 19-May-19

Predators Caught per Line

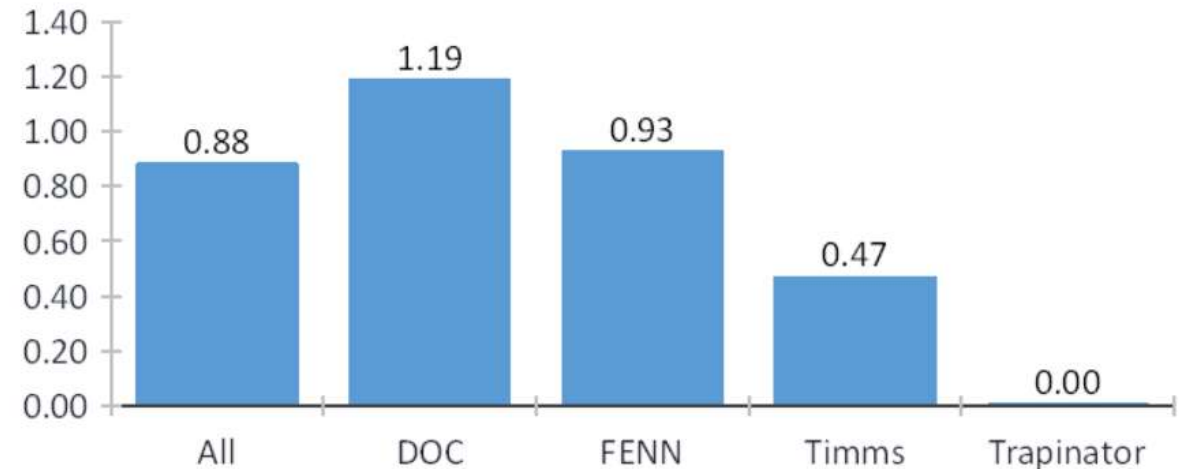
Hedgehogs Cats Stoats Weasels Ferrets Rats



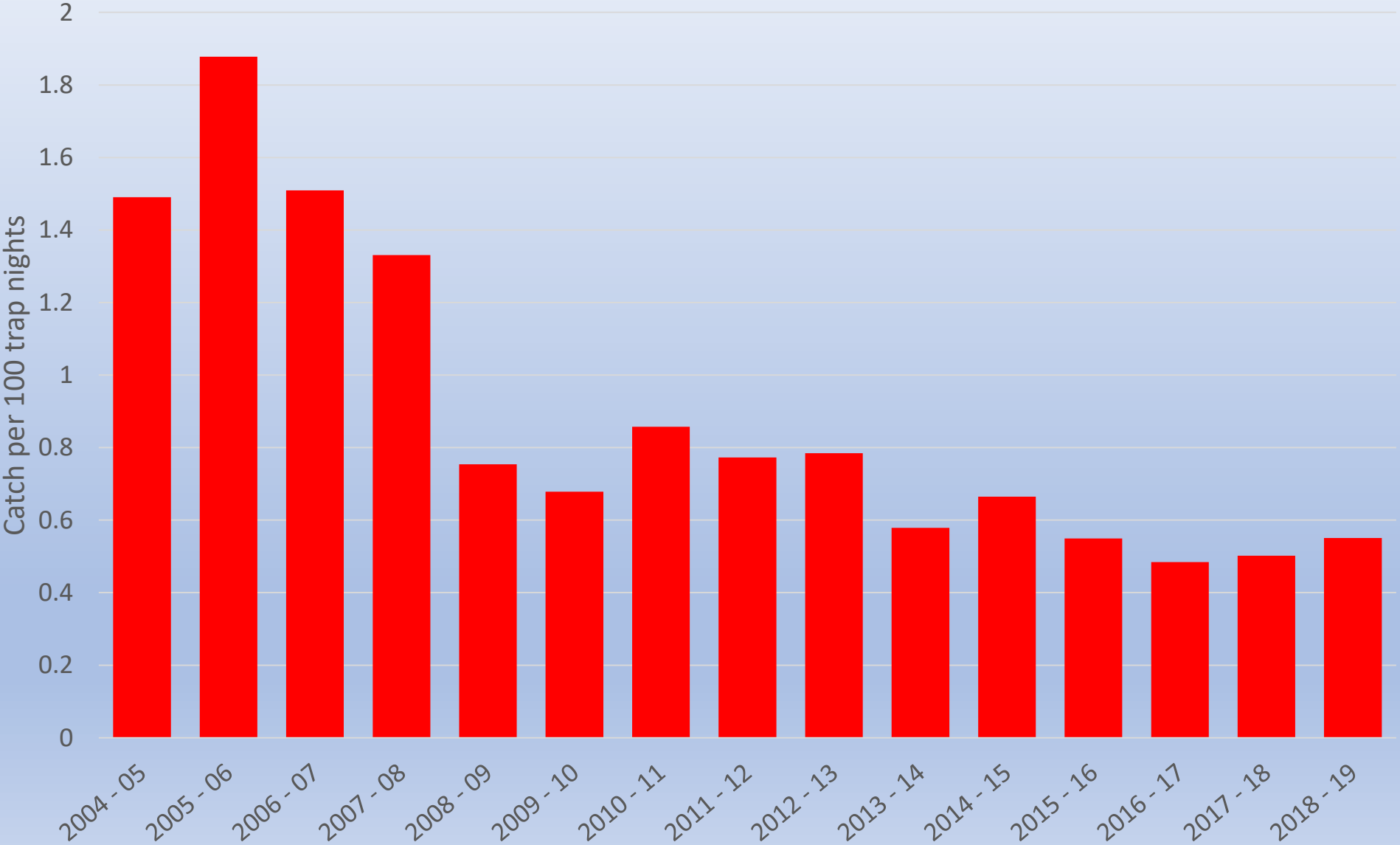
From: 01-Feb-19

To: 19-May-19

Predators Caught per 100 Trap Nights



Predator control. Decline in trap-catch over time



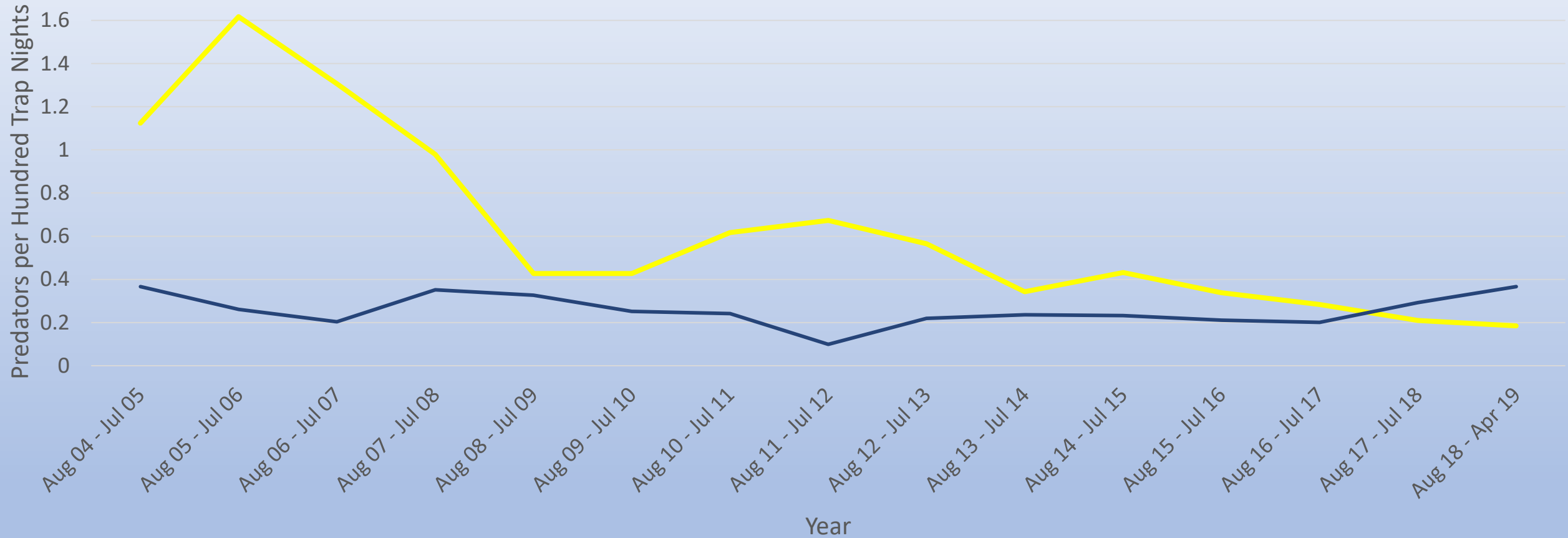
BUT:

This graph is misleading

Predator control. The reality is that just hedgehogs declined

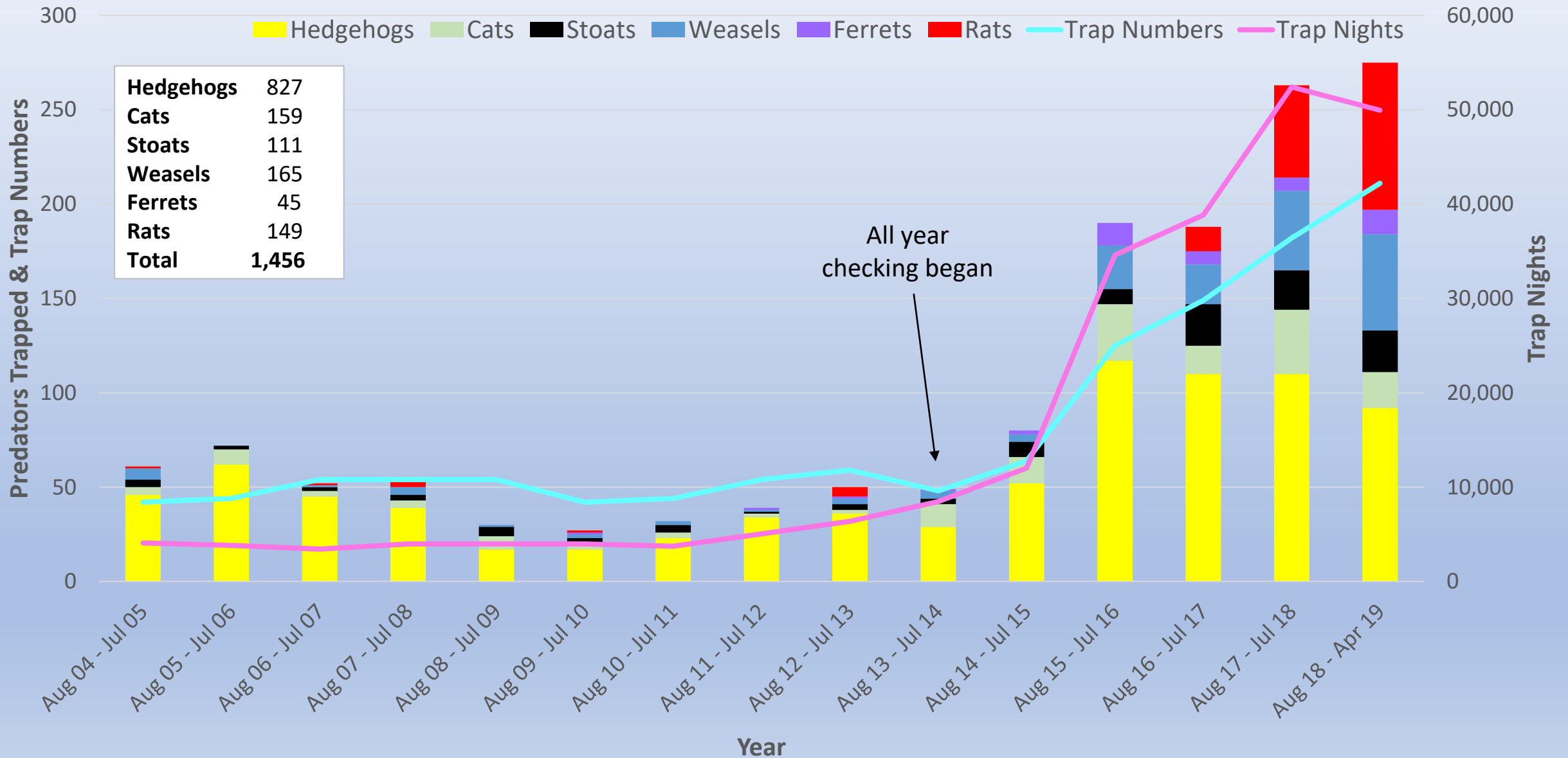
ARRG - Trap Nights by Predator - 2004 - 2019

Hedgehogs Total, no hedgehogs



Predator control.

ARRG - Predators Trapped, Trap Numbers & Trap Nights - 2004 - 2019



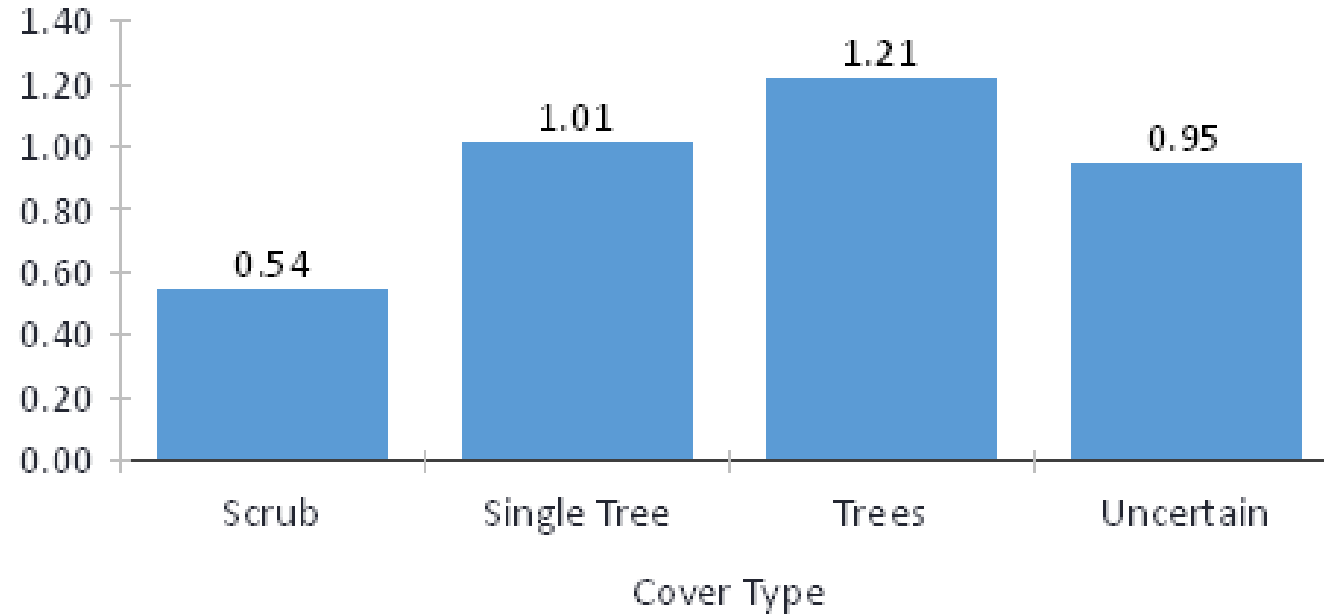
Predator control.

Where are the predators hanging out?

From: 01-Feb-19

To: 12-Jun-19

Total Predators Caught per 100 Trap Nights by Cover Type

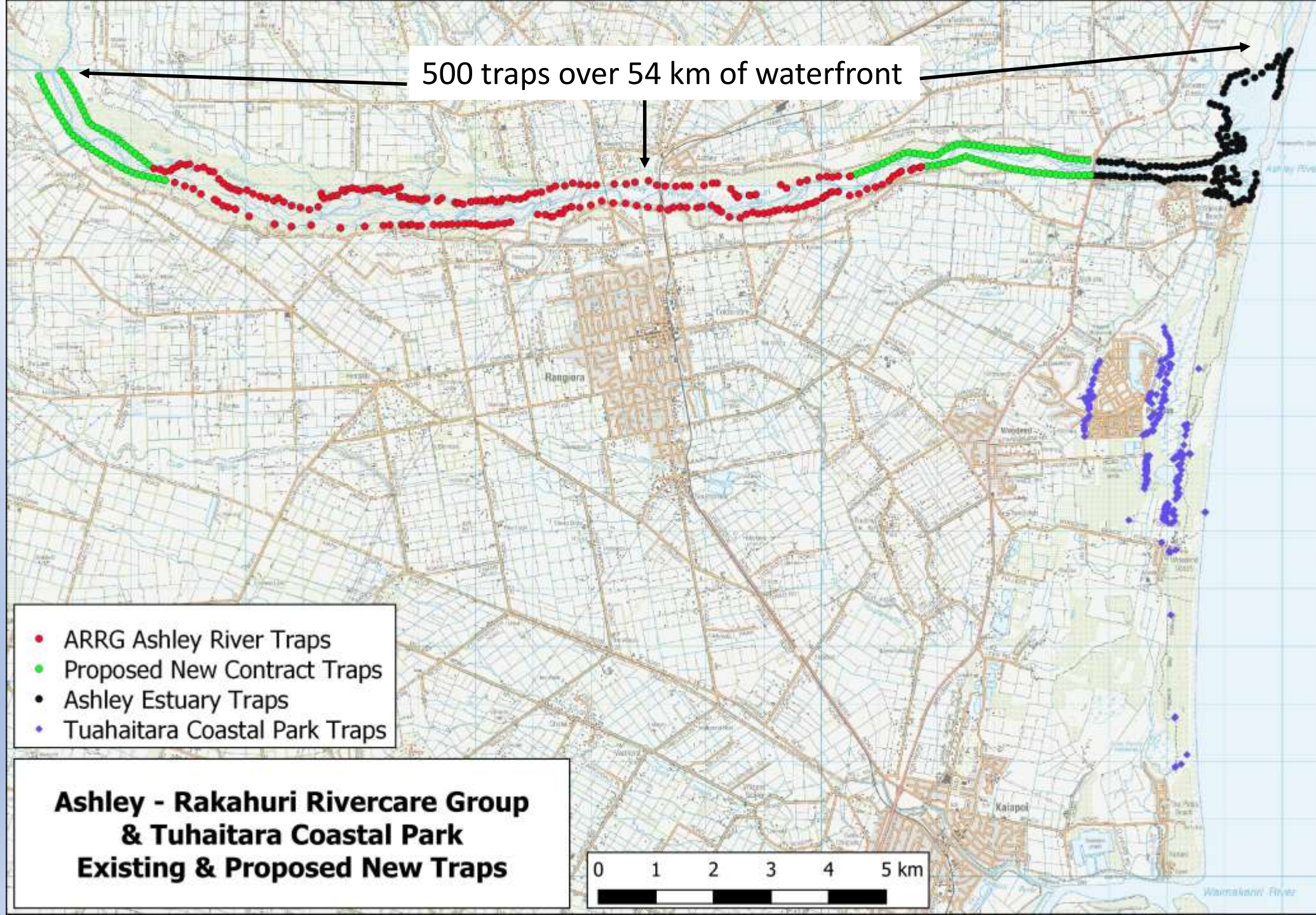


Catch per 100 trap nights for each species and cover type:

Cover Type	Trap Nights	Hedgehogs	Cats	Stoats	Weasels	Ferrets	Rats
Scrub	13591	0.213	0.088	0.022	0.110	0.022	0.088
Single Tree	1591	0.503	0.189	0.000	0.126	0.063	0.126
Trees	9989	0.380	0.030	0.100	0.140	0.050	0.511
Uncertain	2640	0.038	0.038	0.114	0.152	0.038	0.568

Predator control.

Existing and proposed trap locations



Shingle extraction. Study of impact on bird breeding

- Bird Nests
- Black-fronted Tern
 - Banded Dotterel
 - ◆ Pied Stilt
 - ★ Dotterel nest prior to excavation

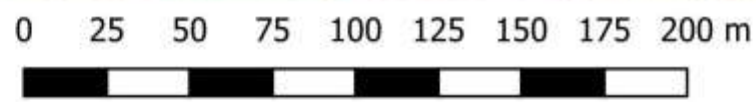
Extraction start
2/9/18

Extraction area

Drone photo composite image 15/12/18

1/11/18

15/12/18



- 📷 Trail Cameras
- Temporary Traps
 - + DOC
 - + TIMS
- Permanent Traps
 - + DOC
 - + TIMS



**Swamp Road
Gravel Extraction & Bird Nests**

Awareness. Maintaining good advocacy with public and agencies



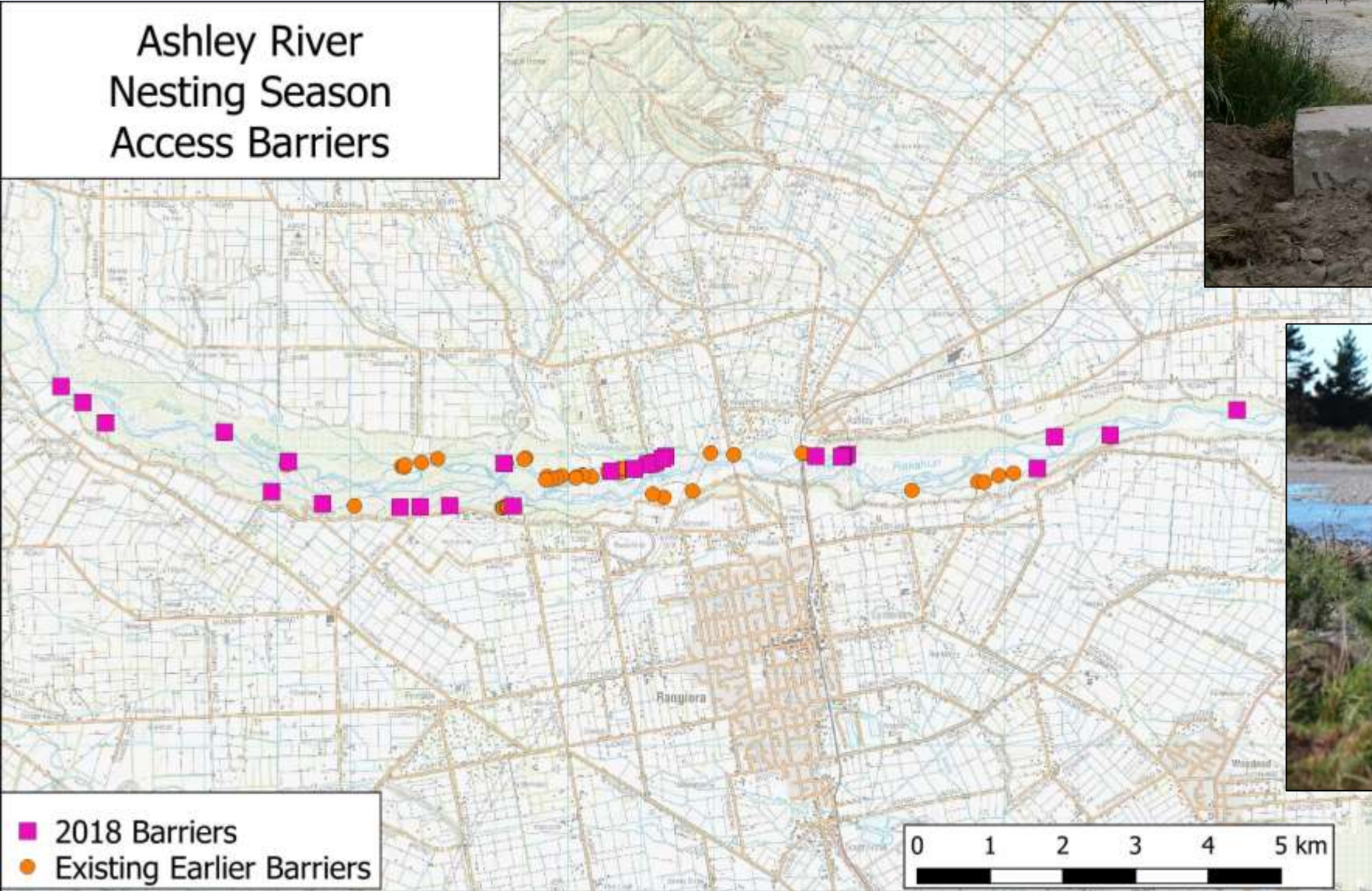
Media articles, signs, talks (particularly to schools), bookmarks, video, displays

www.arrg.org.nz



Awareness. Keeping vehicles out of riverbed during breeding season

Ashley River
Nesting Season
Access Barriers



Agreement with Combined 4WD Club

Fund raising

Now well supported by Group trap making, sponsorship and donations. Major project funding has come from DOC, ECan and Rata Foundation.



Trap making



Sponsorship



Major projects include weed clearing, trapping and production of a documentary.



Donations



Sausage sizzle

What is needed for a community group to be successful?

- **A leader**
 - Credible, and preferably ‘passionate’
- **Professionals** (paid – dedicated time)
 - Those whose assistance comes as part of their job e.g, DOC, Waimak DC, ECan
 - Contracted professionals
 - e.g., professional ornithologist, earthmovers
- **Volunteers** (unpaid - spare time)
 - ‘priority’ volunteers; who consider assisting the Group as a high priority
 - ‘non-priority’ volunteers; keen to assist, but the Group is not at the top of their spare time list

Plus a committee with correct functioning