

Field Trip to Blythe Valley

Sunday 30 March, 10am - 1pm,
plus afternoon option



The Hurunui Biodiversity Trust and Blythe Valley Community Catchment Group invite you to a field day focused on the group's successful trapping programme, followed by a walk through native planting sites. After lunch, we'll visit a wetland under restoration, then drive to a spectacular lookout and out to the Nape Nape coast.

Our hosts are Richard Shaw and Nicki Murray and the Le Pine family. They are located near Nape Nape, about 30 mins north east of Greta Valley. BVCCG is a sub-group of Hurunui District Landcare Group, which is supporting this field day.



Trapping talk and demonstration:

BVCCG's trapping programme covers 14,400ha. Richard will discuss target pests, monitoring results, types of traps and adapting to what works best.

Native plantings:

We'll visit Richard and Nicki's covenant and extensive regeneration plantings, hear about recovery from fire damage, and discuss weed control.

Wetland, lookout and Nape Nape tour: The lookout and wetland are on the neighbouring Le Pine's property. We'll share 4WD vehicles to get there, then drive out to Nape Nape to visit the bush-clad reserve and beach.

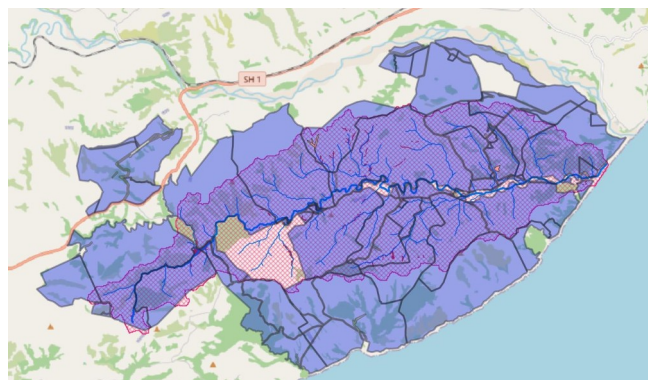
Please register, so we can give you location and logistics details

RSVP to: hurunuibiodiversity@gmail.com or call Belinda Meares on 0221 600383

For more information, click on: [Hurunui Biodiversity Trust](#) and [Blythe Valley Community Catchment Group](#)



view from lookout



BVCCG map