

2 Important Areas for New Zealand Seabirds

Sites on Land

Rivers, estuaries, coastal
lagoons & harbours



Forest & Bird
GIVING NATURE A VOICE



IMPORTANT AREAS FOR NEW ZEALAND SEABIRDS



Forest & Bird
GIVING NATURE A VOICE

This document has been prepared for Forest & Bird by Chris Gaskin, IBA Project Coordinator (NZ).

The Royal Forest & Bird Protection Society of New Zealand
Level One, 90 Ghuznee Street
PO Box 631
Wellington 6140
NEW ZEALAND

This report is available from the Forest & Bird website in pdf form.

© Copyright February 2016, Forest & Bird

Contributors

The following individuals have contributed to the profiles in this document in a variety of ways, including supply of data and information about seabirds, and reviewing draft material, site profiles, species lists and site maps.

Nick Allen, Tim Barnard, Tony Beauchamp, Mike Bell, Mark Bellingham, Robin Blyth, Phil Bradfield, John Cheyne, Wynston Cooper, Andrew Crossland, Philippa Crisp, Paul Cuming, John Dowding, Hannah Edmonds, Lloyd Esler, Julian Fitter, Peter Frost, Mel Galbraith, Liz Garson, Peter Gaze, Andrew Grant, Tony Habraken, Kate Hand, Ken Hughey, Elaine Lagnaz, Chris Lalas, Peter Langlands, David Lawrie, Eila Lawson, Nick Ledgard, Nikki McArthur, Rachel McClellan, Craig McKenzie, Bruce McKinlay, Michael McSweeney, David Melville, Gary Melville, Mark O'Brien, Colin O'Donnell, Gwenda Pulham, Aalbert Rebergen, Phil Rhodes, Adrien Riegen, Neil Robertson, Paul Sagar, Frances Schmechel, Rob Schuckard, Ian Southey, Kate Steffens, Graeme Taylor, Gillian Vaughan, Jan Walker, Susan Waugh, David Wilson, Kerry-Jayne Wilson, Steve Wood, Keith Woodley.

Cover design: Danielle McBride, Paradigm Associates, Auckland

Front cover: Rachel McLellan (Black-billed Gulls), Craig McKenzie (Black-fronted Tern)

Back cover: Frederic Pelsy (Ahuriri River)

Recommended citation: Forest & Bird (2016). *New Zealand Seabirds: Sites on Land, Rivers, estuaries, coastal lagoons & harbours*. The Royal Forest & Bird Protection Society of New Zealand, Wellington, New Zealand.

NZ052	Kahutara River	Kaikoura
-------	----------------	----------

Location	New Zealand, Kaikoura
Central coordinates	42.434036°S, 173.588405°E (SH1 bridge)
IBA criteria	A1
Area	702 ha
Altitude	0 - 320m
Year of Assessment	2013

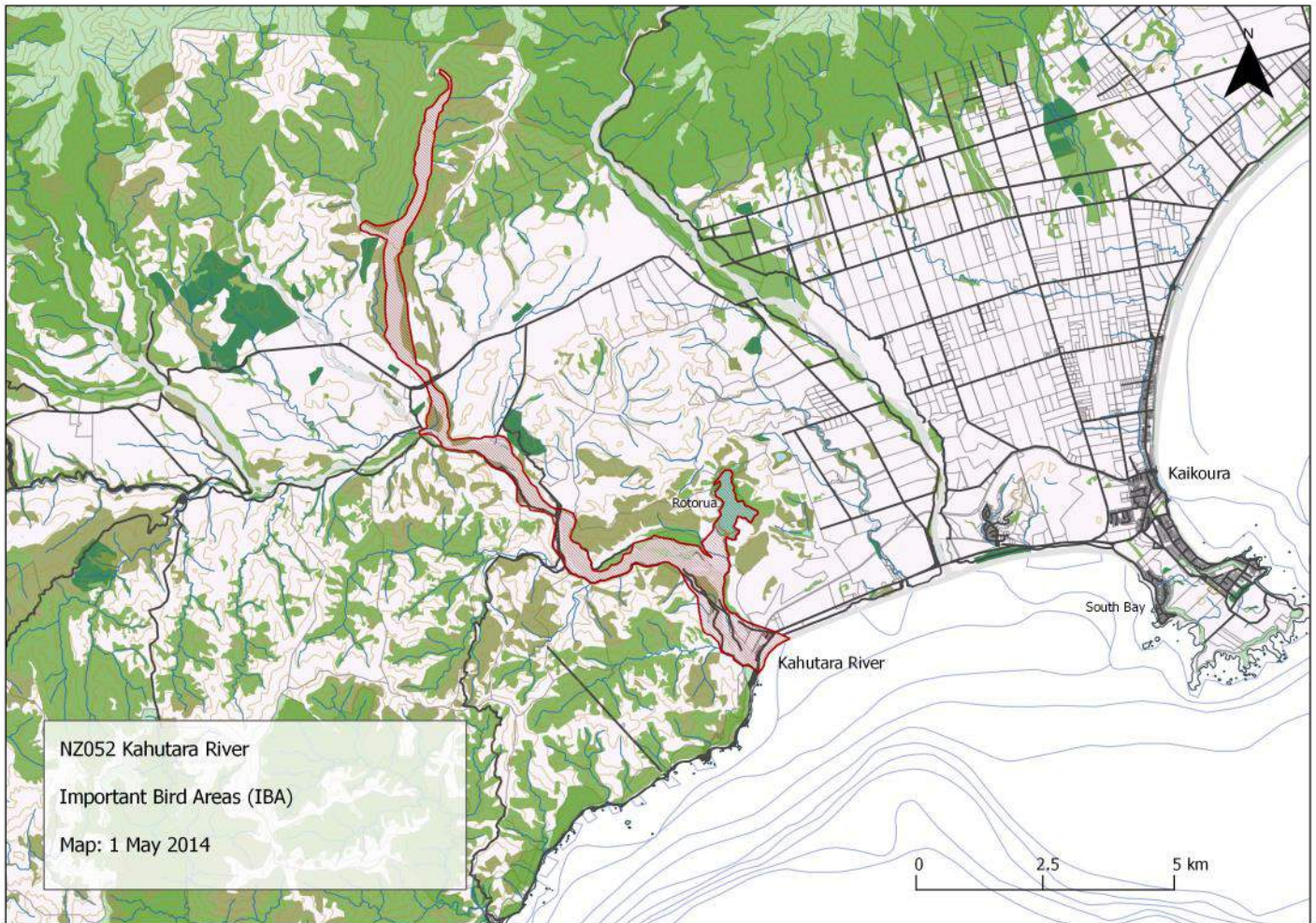
Populations of IBA trigger species:

Species	Season	Period	Population estimate	IBA criteria	IUCN cat.	NZ Threat Class.
Black-billed Gull	Breeding	2000-2008	55-67	A1	EN	Nationally Critical
Black-fronted Tern	Breeding	2000-2009	5-6	A1	EN	Nationally Vulnerable

Ornithological information: Besides the trigger species the following are confirmed or likely to be breeding: Australasian Crested Grebe, Black Shag, Pied Shag, Little Shag, White-faced Heron, Black Swan, Canada Goose, Paradise Shelduck, Grey Duck, Mallard, Australasian Harrier, South Island Pied Oystercatcher, Pied Stilt, Banded Dotterel, Spur-winged Plover, Southern Black-backed Gull, Red-billed Gull, White-fronted Tern, NZ Pigeon, Shining Cuckoo, Morepork, NZ Kingfisher, Welcome Swallow, NZ Pipit, Grey Warbler, South Island Fantail, Silveryeye, Bellbird. Californian Quail, Skylark, Blackbird, Song Thrush, Yellowhammer, Chaffinch, Greenfinch, Goldfinch, Redpoll, House Sparrow, Starling, Australian Magpie.

Protected area	Designation	Relationship with IBA
Kahutara River	Conservation Area	Protected area contained within site
Lake Rotorua	Wildlife Reserve	Protected area contained within site
Kahutara River	Marginal Strip	Protected area overlaps with site

IUCN Habitat	Habitat detail	Extent (% of site)
Marine Intertidal	Shingle Shoreline	Minor
Marine Coastal/Supratidal	Rivermouth (small estuary and spit)	Major
Wetlands (inland)	Permanent Rivers; River Gravel Beds; Lake (Rotorua) Small	Major
Introduced Vegetation	Broom, gorse, pasture grasses & rank weeds, willow margins	Major
Grasslands	Tussock on river flats (upper valleys)	Major
Shrubland	Kanuka, matagouri (<i>Discaria toumatou</i>), bracken	Major



Threats to the site (pressure) - IUCN Classifications

Threat Level	Notes	Timing	Scope	Severity
Invasive & other problematic species, genes & diseases	Invasive alien species - mustelids, cats, rats, hedgehogs	Happening now	Some of area/ population (10-49%)	Moderate to rapid deterioration
Human intrusions and disturbance	Recreational activities by river users - includes dogs.	Happening now	Some of area/ population (10-49%)	Slow but significant deterioration
Natural system modifications	Weed encroachment on nesting sites	Happening now	Some of area/ population (10-49%)	Slow but significant deterioration
Climate change and severe weather	Floods	Likely in short term (within 4 years)	Some of area/ population (10-49%)	Moderate to rapid deterioration

References:

O'Donnell, C.F.J., Hoare, J.M. 2011. Meta-analysis of status and trends in breeding populations of black-fronted terns (*Chlidonias albobriatus*) 1962-2008. *New Zealand Journal of Ecology* 35: 32-43

Robertson, C.J.R., Hyvönen, P., Fraser, M.J., Pickard, C.R. 2007. *Atlas of bird distribution in New Zealand 1999-2004*. Ornithological Society of New Zealand, Inc. Wellington.



Forest & Bird
GIVING NATURE A VOICE

www.forestandbird.org.nz/important-bird-areas

Photo: Frederic Pelsy
Front: Rachel McClellan, Craig McKenzie